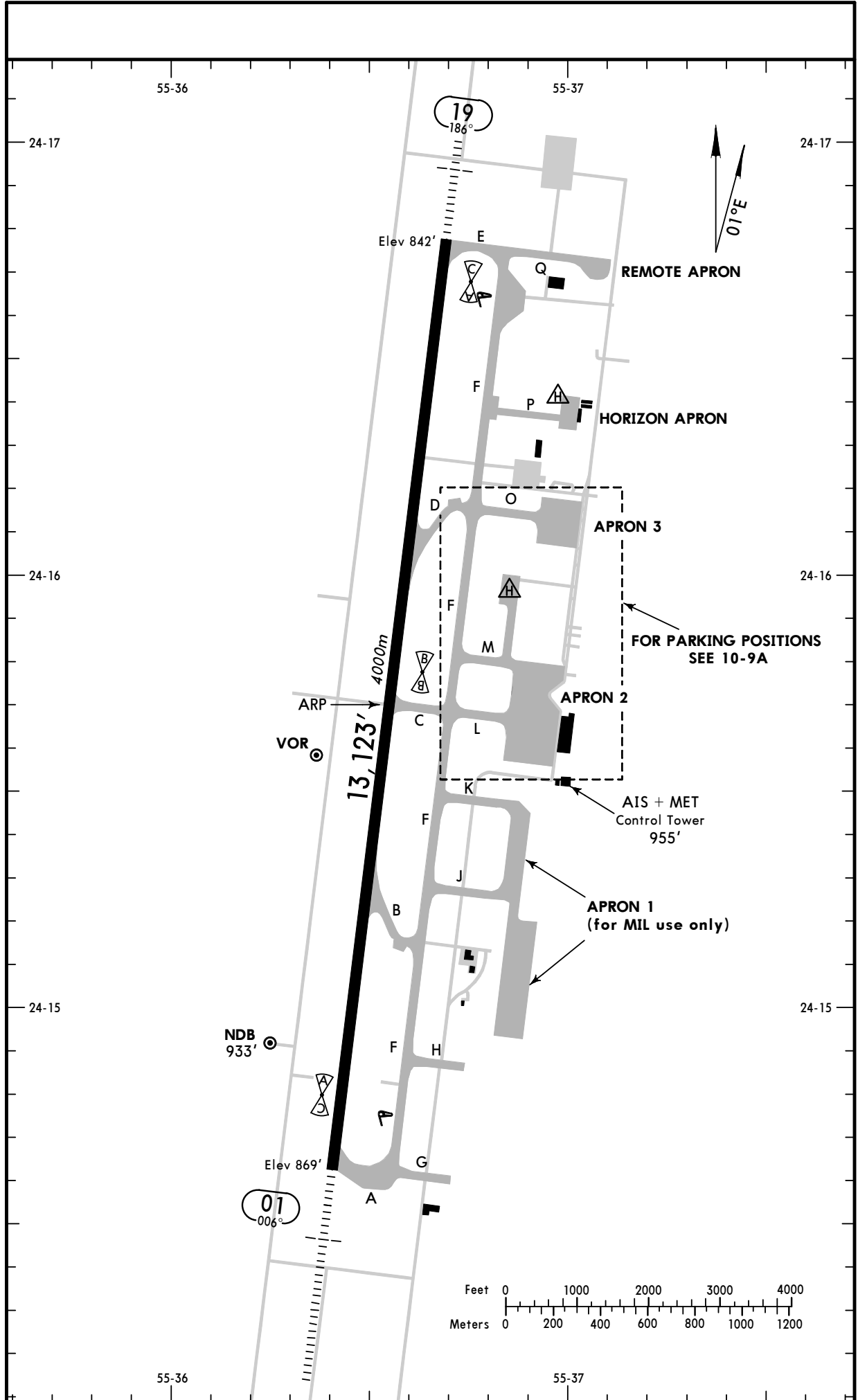


OMAL/AAN  
Apt Elev 869'  
N24 15.7 E055 36.6

21 MAY 10 (1)

AL AIN, UAE  
AL AIN INTL

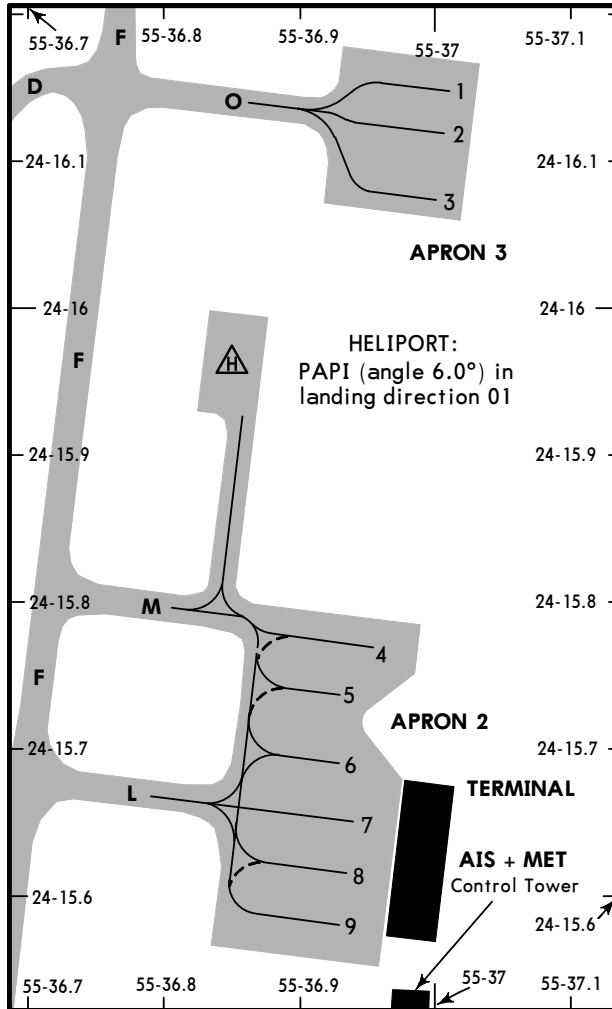


OMAL/AAN

AL AIN, UAE

21 MAY 10 2

AL AIN INTL



INS COORDINATES	
STAND No.	COORDINATES
1	N24 16.2 E055 37.0
2, 3	N24 16.1 E055 37.0
4	N24 15.8 E055 37.0
5 thru 7	N24 15.7 E055 36.9
8, 9	N24 15.6 E055 36.9

**PUSH-BACK PROCEDURE**

ATC clearance to push-back only relates to separation from other acft under ATC control. The responsibility for ensuring that the path behind the acft is clear of all obstructions rests with the acft captain through the airline ground engineer.

RWY	LANDING BEYOND	USABLE LENGTHS		TAKE-OFF	WIDTH
		Threshold	Glide Slope		
01 19	HIRL (60m) CL (30m) HIALS SFL PAPI (3.0°) RVR		12,001' 3658m	① ②	148' 45m

① From rwy head 13,123' (4000m)  
 Twy B int 8858' (2700m)  
 Twy C int 6562' (2000m)

② From rwy head 13,123' (4000m)  
 Twy D int 8202' (2500m)  
 Twy C int 6562' (2000m)

**JAR-OPS**

**TAKE-OFF ①**

	All Rwys				
	LVP must be in force				
	RL, CL & mult. RVR req	RL & CL	RCLM (DAY only) or RL	RCLM (DAY only) or RL	NIL (DAY only)
A					
B	150m	200m	250m	400m	500m
C					
D	200m	250m	300m		

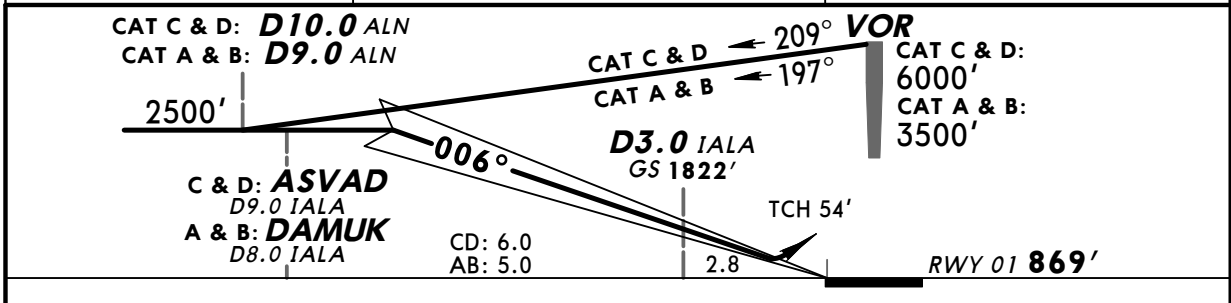
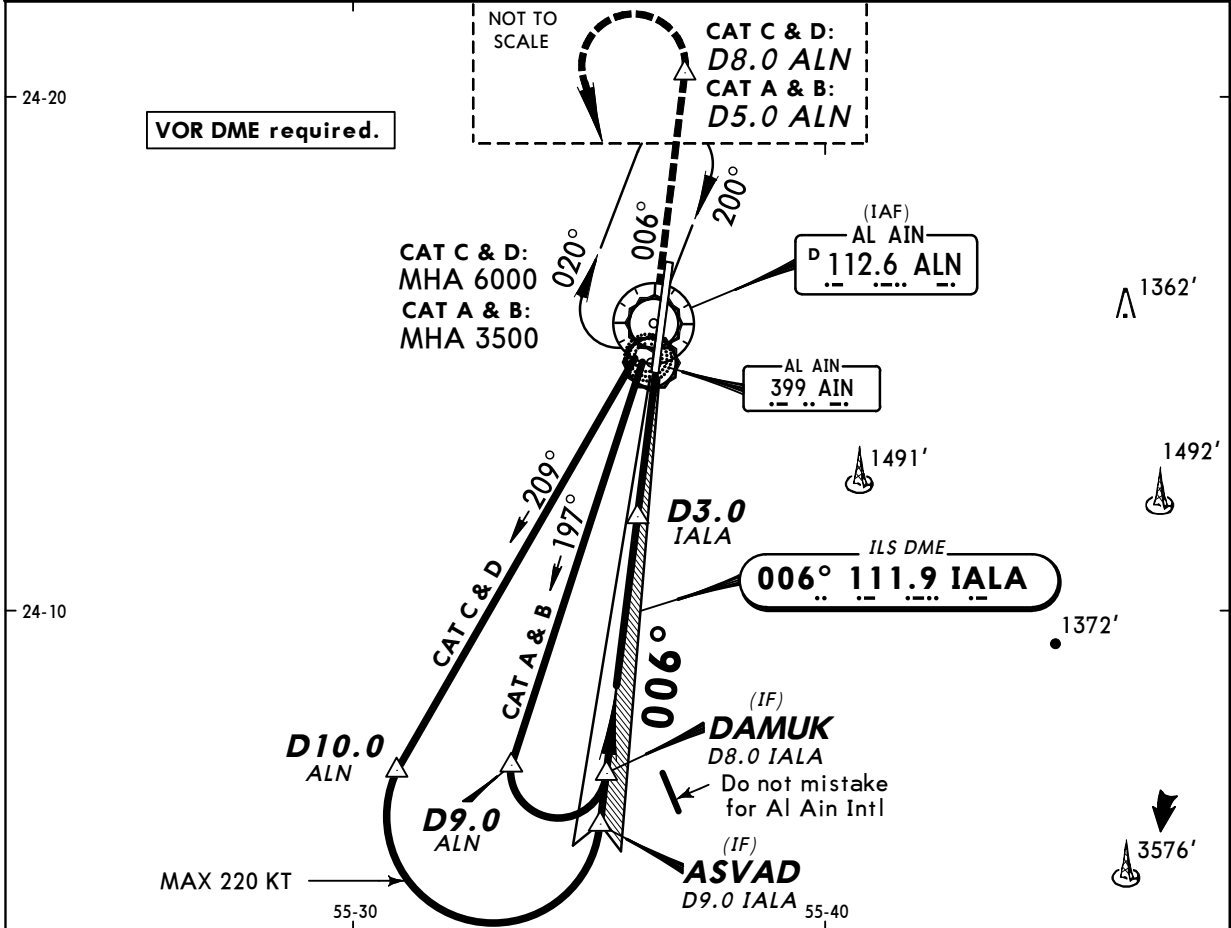
① Operators applying U.S. Ops Specs: CL required below 300m.

OMAL/AAN  
AL AIN INTL

21 MAY 10 3

AL AIN, UAE  
ILS Z or ILS Y Rwy 01

LOC IALA <b>111.9</b>	Final Apch Crs <b>006°</b>	GS <b>D3.0 IALA</b> 1822' (953')	ILS DA(H) <b>1069' (200')</b>	Apt Elev <b>869'</b>  RWY <b>869'</b>	
<b>MISSED APCH:</b> Climb on R-006 to CAT A & B: D5.0 ALN, CAT C & D: D8.0 ALN, then turn LEFT to VOR to join holding at CAT A & B: 3500', CAT C & D: 6000'.					
Alt Set: hPa    Rwy Elev: 31 hPa    Trans level: FL 150    Trans alt: 13000'				MSA ALN VOR	



Gnd speed-Kts	70	90	100	120	140	160	HIALS Refer to Missed Apch above
GS	3.00°	377	484	538	646	861	

JAR-OPS		STRAIGHT-IN LANDING RWY 01		CIRCLE-TO-LAND	
ILS		LOC (GS out)		NOT AUTHORIZED	
DA(H) <b>1069' (200')</b>		LOC (GS out)			
FULL		ALS out		Max Kts	MDA(H)
A				100	1400' (531')
B				135	1400' (531')
C	RVR 550m	RVR 1000m		180	1500' (631') <span style="border: 1px solid black; padding: 1px;">1</span> 2400m
D				205	1570' (701') <span style="border: 1px solid black; padding: 1px;">1</span> 3600m

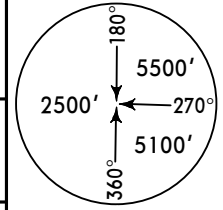
1 Not authorized East of runway.

OMAL/AAN  
AL AIN INTL

21 MAY 10 (4)

CAT C & D AL AIN, UAE  
ILS X Rwy 01

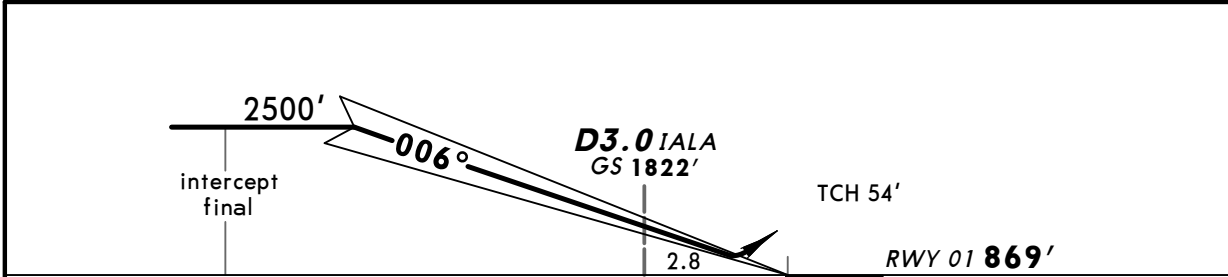
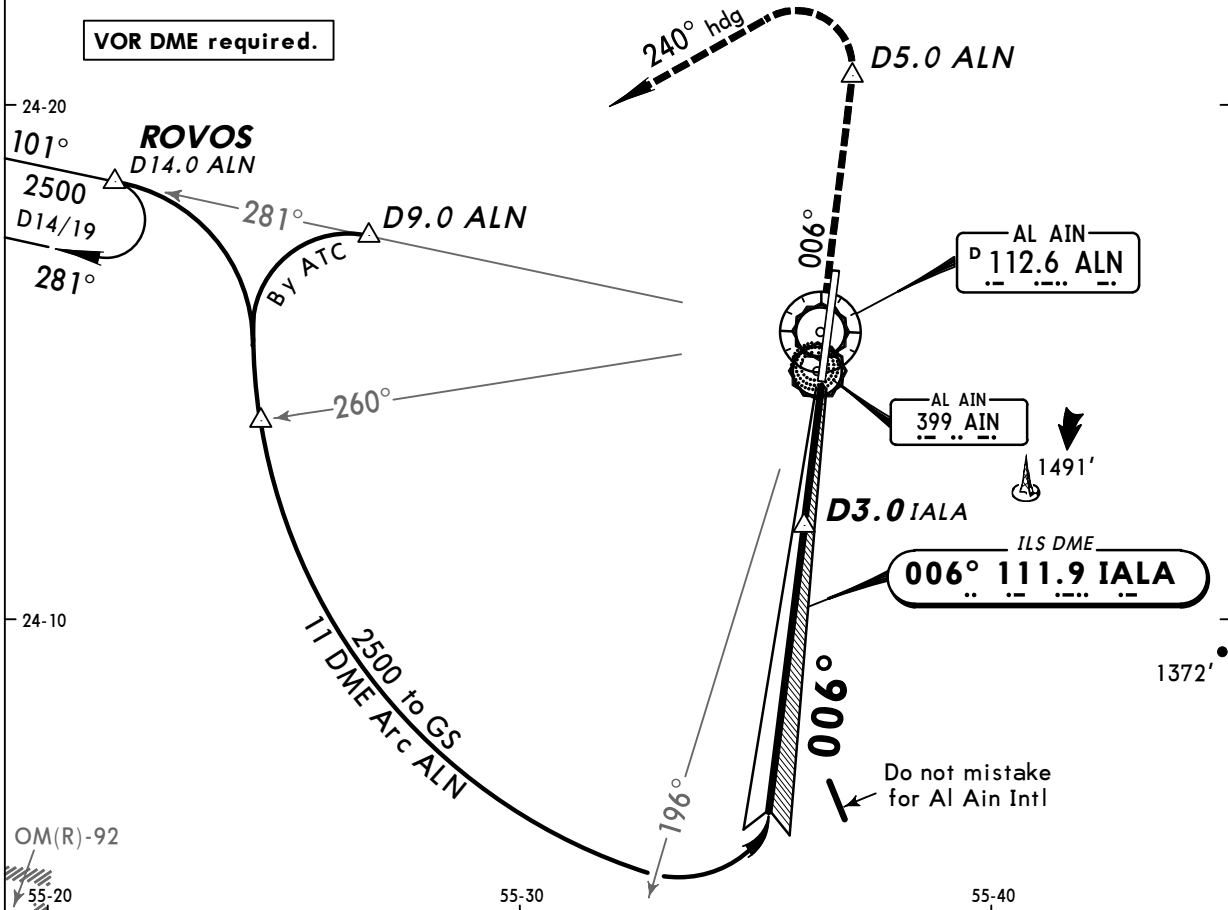
LOC IALA <b>111.9</b>	Final Apch Crs <b>006°</b>	GS <b>D3.0 IALA</b> <b>1822' (953')</b>	ILS DA(H) <b>1069' (200')</b>	Apt Elev <b>869'</b> RWY <b>869'</b>
--------------------------	-------------------------------	---	----------------------------------	---



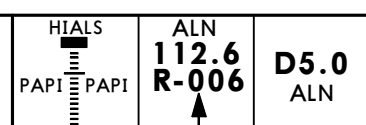
**MISSED APCH:** Climb on R-006 to D5.0 ALN, then turn LEFT onto heading 240° to intercept and follow R-281 to join ROVOS holding at 3500' and as directed.

Alt Set: hPa Rwy Elev: 31 hPa Trans level: FL 150 Trans alt: 13000'

MSA ALN VOR



Gnd speed-Kts	70	90	100	120	140	160	
GS	3.00°	377	484	538	646	753	861



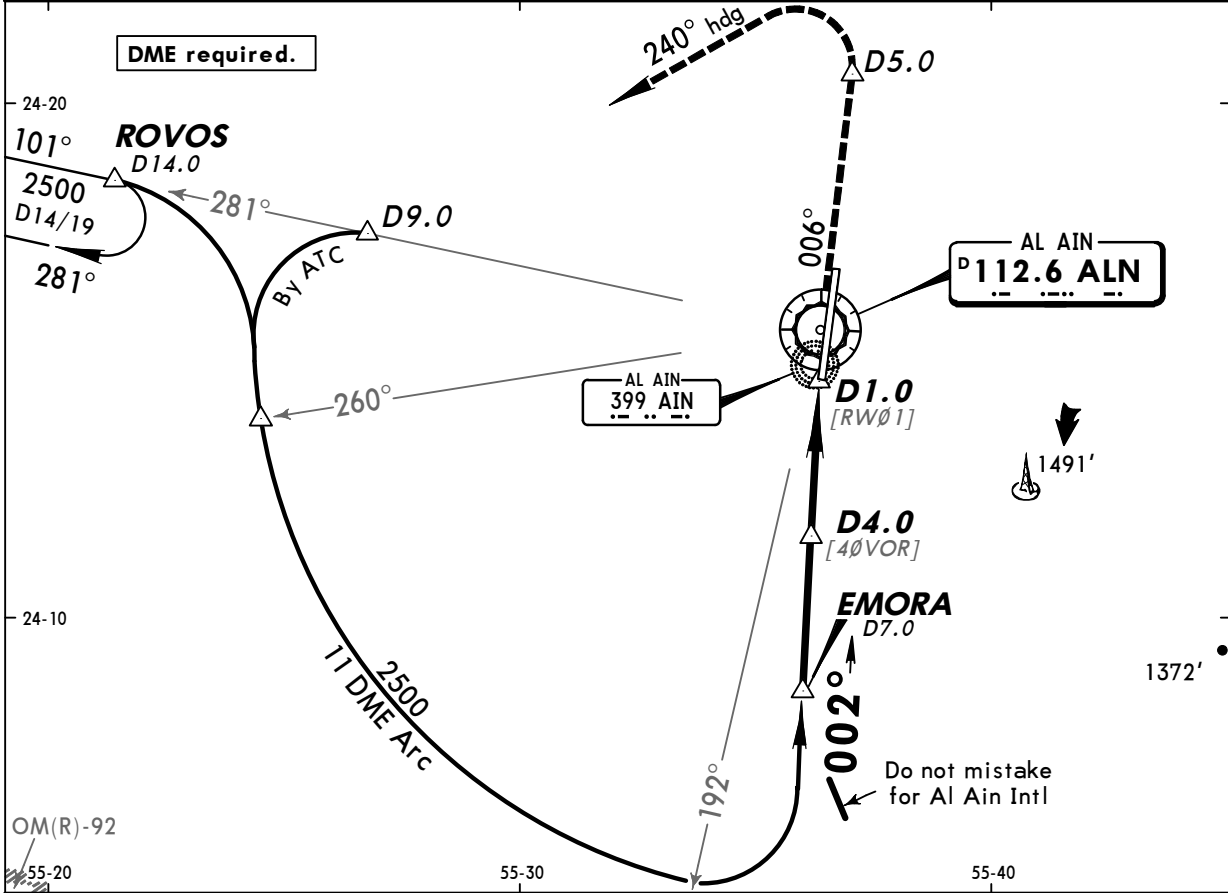
<b>JAR-OPS</b>		STRAIGHT-IN LANDING RWY 01		CIRCLE-TO-LAND	
ILS		LOC (GS out)		Not authorized East of runway	
DA(H) <b>1069' (200')</b>				Max Kts	
FULL		ALS out		MDA(H) VIS	
A	NOT AUTHORIZED		NOT AUTHORIZED		A
B	NOT AUTHORIZED		NOT AUTHORIZED		B
C	RVR 550m	RVR 1000m	NOT AUTHORIZED		180
D					205
					1500'(631') 2400m
					1570'(701') 3600m

OMAL/AAN  
AL AIN INTL

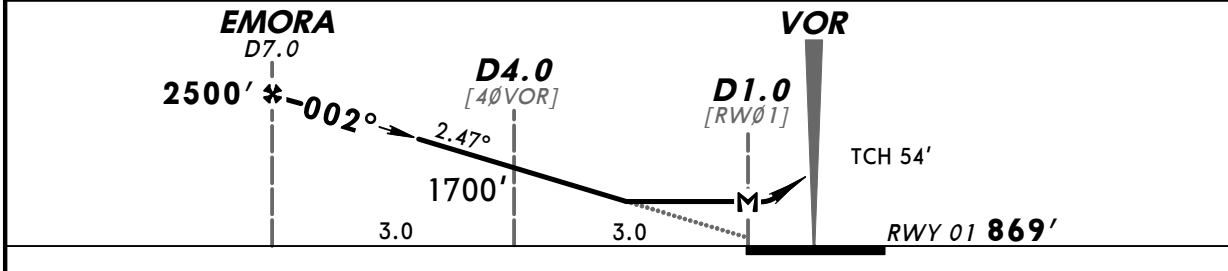
21 MAY 10 5 CAT C & D

AL AIN, UAE  
VOR A Rwy 01

VOR ALN <b>112.6</b>	Final Apch Crs <b>002°</b>	Minimum Alt <b>EMORA</b> 2500' (1631')	MDA(H) <b>1350' (481')</b>	Apt Elev 869' RWY <b>869'</b>	
<b>MISSED APCH:</b> Climb on R-006 to D5.0, then turn LEFT onto heading 240° to intercept and follow R-281 to join ROVOS holding at 3500' and as directed.					
Alt Set: hPa		Rwy Elev: 31 hPa	Trans level: FL 150	Trans alt: 13000'	MSA ALN VOR



ALN DME	7.0	6.0	5.0	4.0	3.0
ALTITUDE	2500'	2240'	1980'	1720'	1460'



Gnd speed-Kts	70	90	100	120	140	160	HIALS ALN <b>112.6</b> <b>R-006</b> D5.0
Descent angle	2.47°	306	393	437	524	699	
MAP at D1.0							

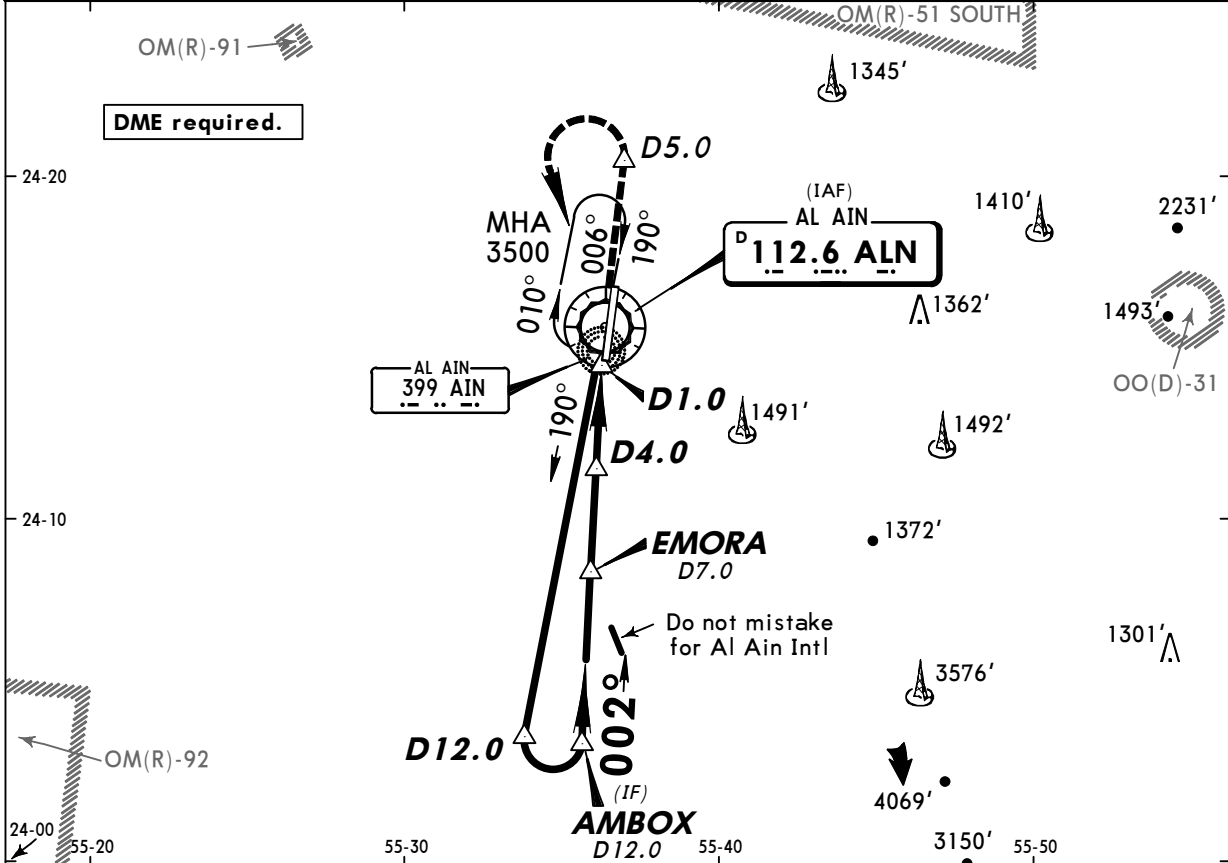
JAR-OPS STRAIGHT-IN LANDING RWY 01			CIRCLE-TO-LAND		
MDA(H) <b>1350' (481')</b>			Not authorized East of runway		
ALS out			Max Kts	MDA(H)	VIS
A	NOT AUTHORIZED		A	NOT AUTHORIZED	
B	NOT AUTHORIZED		B	NOT AUTHORIZED	
C	RVR 1200m	RVR 2000m	180	1500' (631')	2400m
D	RVR 1600m		205	1570' (701')	3600m

OMAL/AAN  
AL AIN INTL

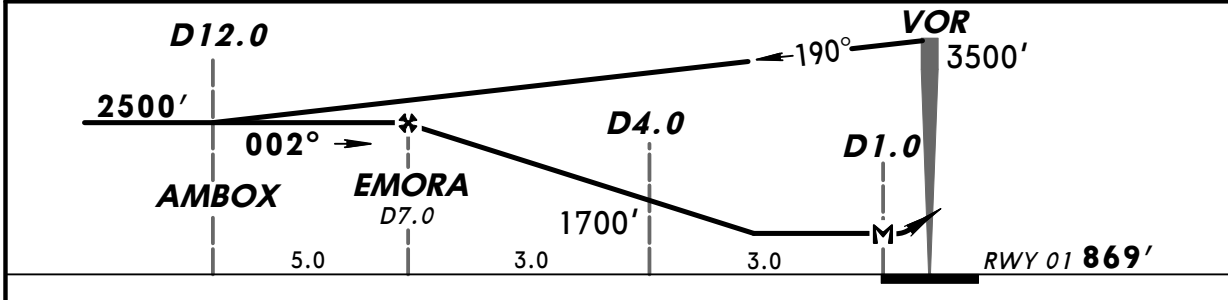
21 MAY 10 6 CAT A & B

AL AIN, UAE  
VOR B Rwy 01

VOR ALN <b>112.6</b>	Final Apch Crs <b>002°</b>	Minimum Alt <b>EMORA</b> <b>2500'</b> (1631')	MDA(H) <b>1350'</b> (481')	Apt Elev <b>869'</b> RWY <b>869'</b>	
<b>MISSED APCH:</b> Climb on R-006 to D5.0, then turn LEFT to VOR to join holding at 3500'.					
Alt Set: hPa		Rwy Elev: 31 hPa	Trans level: FL 150	Trans alt: 13000'	MSA ALN VOR



ALN DME	7.0	6.0	5.0	4.0	3.0
ALTITUDE	2500'	2240'	1980'	1720'	1460'



Gnd speed-Kts	70	90	100	120	140	160	HIALS 
Descent angle	2.47°	306	393	437	524	699	
MAP at D1.0							

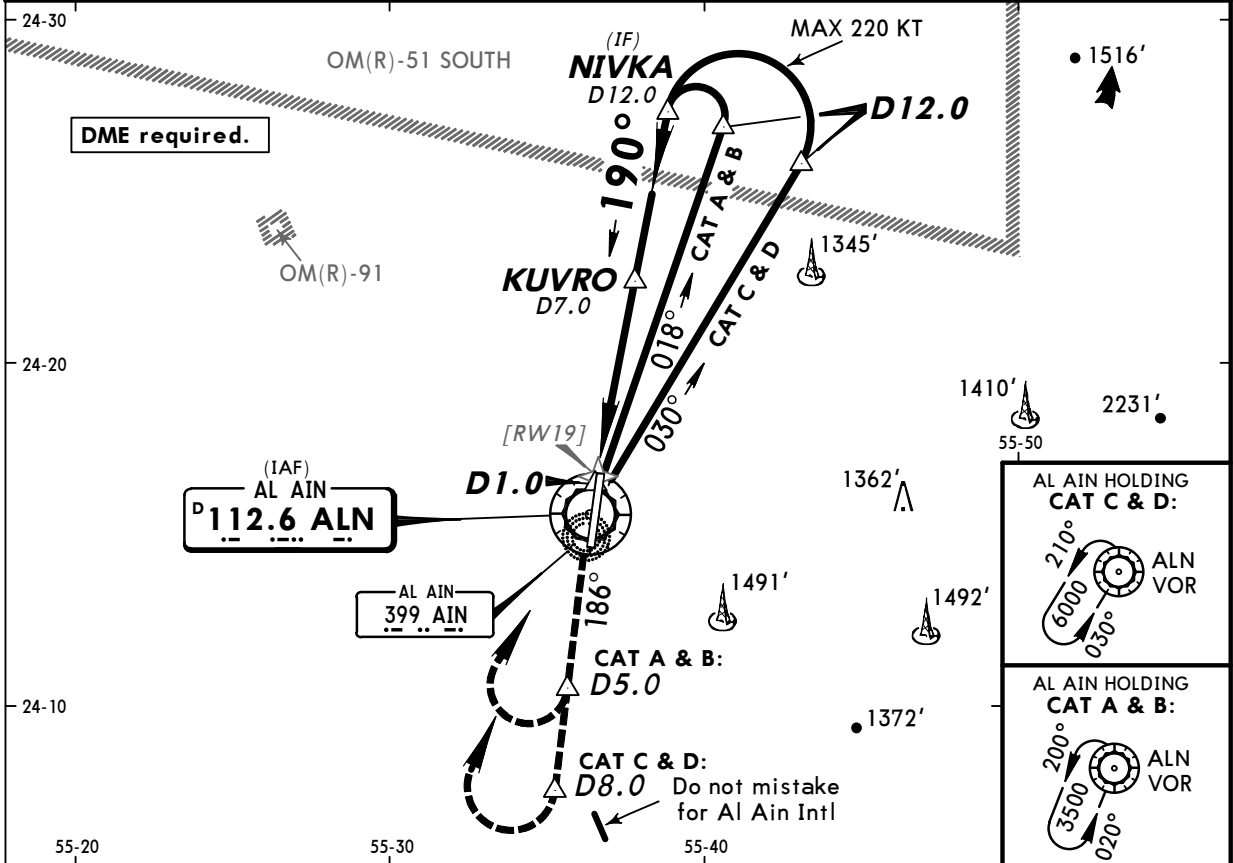
JAR-OPS STRAIGHT-IN LANDING RWY 01			CIRCLE-TO-LAND		
MDA(H) <b>1350'</b> (481')					
		ALS out	Max Kts	MDA(H)	VIS
A	RVR 1000m	RVR 1500m	100	<b>1400'</b> (531')	1500m
B	RVR 1200m		135	<b>1400'</b> (531')	1600m
C	NOT AUTHORIZED		C	NOT AUTHORIZED	
D	NOT AUTHORIZED		D	NOT AUTHORIZED	

OMAL/AAN  
AL AIN INTL

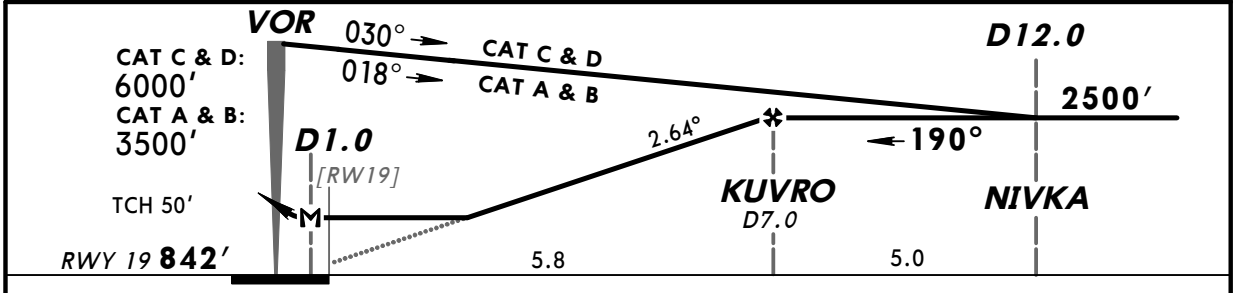
21 MAY 10 7

AL AIN, UAE  
VOR A or VOR C Rwy 19

VOR ALN <b>112.6</b>	Final Apch Crs <b>190°</b>	Minimum Alt <b>KUVRO</b> <b>2500'</b> (1658')	MDA(H) <b>1330'</b> (488')	Apt Elev <b>869'</b>  RWY <b>842'</b>					
<b>MISSED APCH:</b> Climb on R-186 to CAT A & B: D5.0, CAT C & D: D8.0, then turn RIGHT to VOR to join holding at CAT A & B: 3500', CAT C & D: 6000'.									
Alt Set: hPa		Rwy Elev: 30 hPa		Trans level: FL 150		Trans alt: 13000'		MSA ALN VOR	



ALN DME	3.0	4.0	5.0	6.0	7.0
ALTITUDE	1390'	1660'	1940'	2210'	2500'



Gnd speed-Kts	70	90	100	120	140	160	HIALS PAPI PAPI 	Refer to Missed Apch above
Descent angle	2.64°	327	420	467	560	654		
MAP at D1.0								

JAR-OPS STRAIGHT-IN LANDING RWY 19				CIRCLE-TO-LAND			
MDA(H) <b>1330'</b> (488')							
			ALS out	Max Kts			
A	RVR 1400m	RVR 1500m		100	MDA(H) <b>1400'</b> (558')	VIS <b>1500m</b>	
B	RVR 1500m			135	<b>1400'</b> (558')	1600m	
C	RVR 1600m	RVR 2000m		180	<b>1500'</b> (658') <b>2</b>	2400m	
D	RVR 1800m			205	<b>1570'</b> (728') <b>2</b>	3600m	

**1** Circling height based on rwy 19 threshold elevation of 842'. **2** Not authorized East of runway.

OMAL/AAN  
AL AIN INTL

21 MAY 10

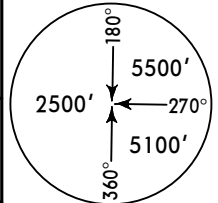
8

CAT C & D

AL AIN, UAE  
VOR B Rwy 19

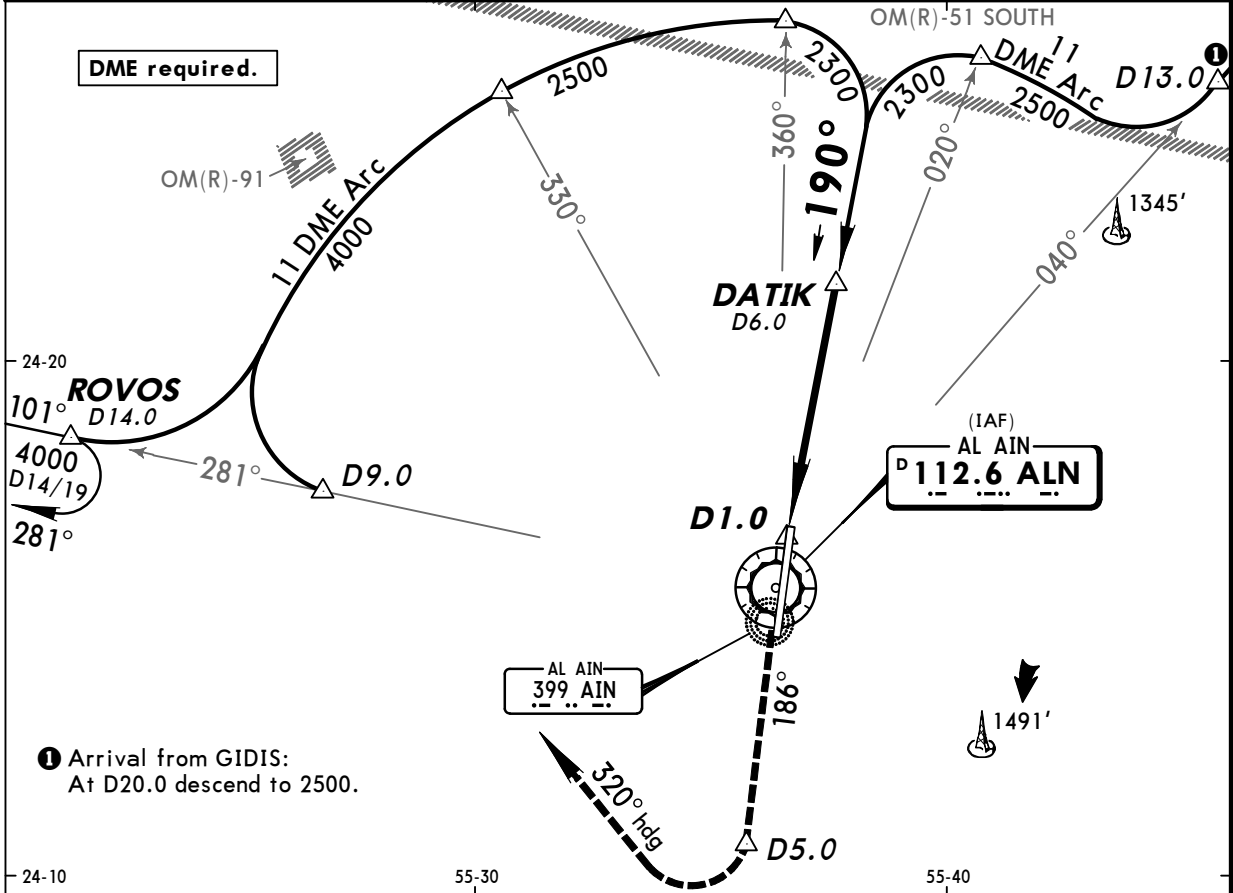
VOR ALN <b>112.6</b>	Final Apch Crs <b>190°</b>	Minimum Alt <b>DATIK</b> <b>2300'</b> (1458')	MDA(H) <b>1330'</b> (488')	Apt Elev <b>869'</b> RWY <b>842'</b>
-------------------------	-------------------------------	---	-------------------------------	---

**MISSED APCH:** Climb to 4000'. Establish on R-186 to D5.0, then turn RIGHT onto heading 320° to intercept and follow R-281 to join ROVOS holding and as directed.



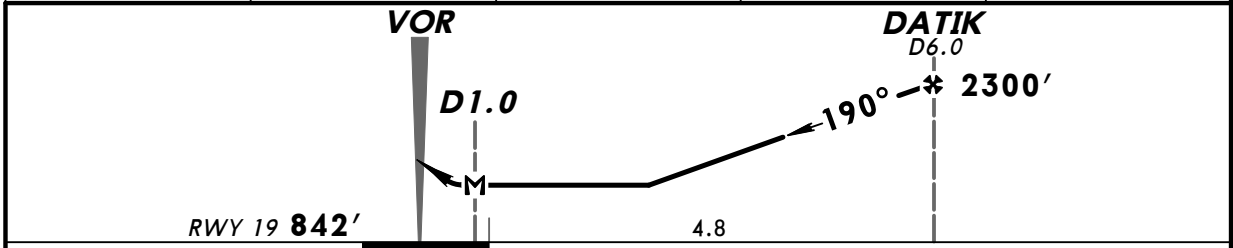
Alt Set: hPa Rwy Elev: 30 hPa Trans level: FL 150 Trans alt: 13000'

MSA ALN VOR

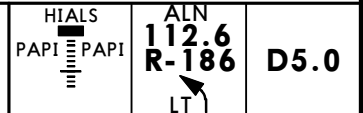


① Arrival from GIDIS:  
At D20.0 descend to 2500.

ALN DME	3.0	4.0	5.0	6.0
ALTITUDE	1420'	1720'	2020'	2300'



Gnd speed-Kts	70	90	100	120	140	160
Descent angle 2.80°	347	446	495	594	693	792
MAP at D1.0						



<b>JAR-OPS</b>		STRAIGHT-IN LANDING RWY 19		CIRCLE-TO-LAND ①	
		MDA(H) <b>1330'</b> (488')		Not authorized East of runway	
		ALS out		Max Kts	
A	NOT AUTHORIZED		A	MDA(H) _____ VIS _____	
B	NOT AUTHORIZED		B	NOT AUTHORIZED	
C	RVR 1600m	RVR 2000m		180	1500' (658') 2400m
D	RVR 1800m	RVR 2000m		205	1570' (728') 3600m

① Circling height based on rwy 19 thresh elev of 842'.

OMAL/AAN  
AL AIN INTL

21 MAY 10 9

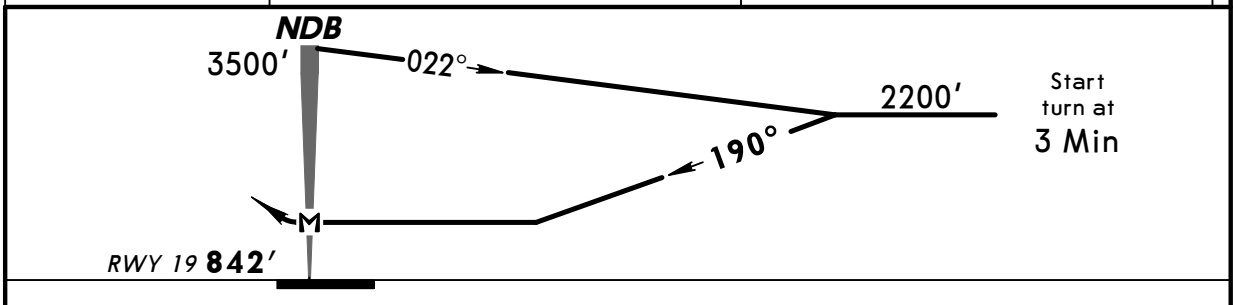
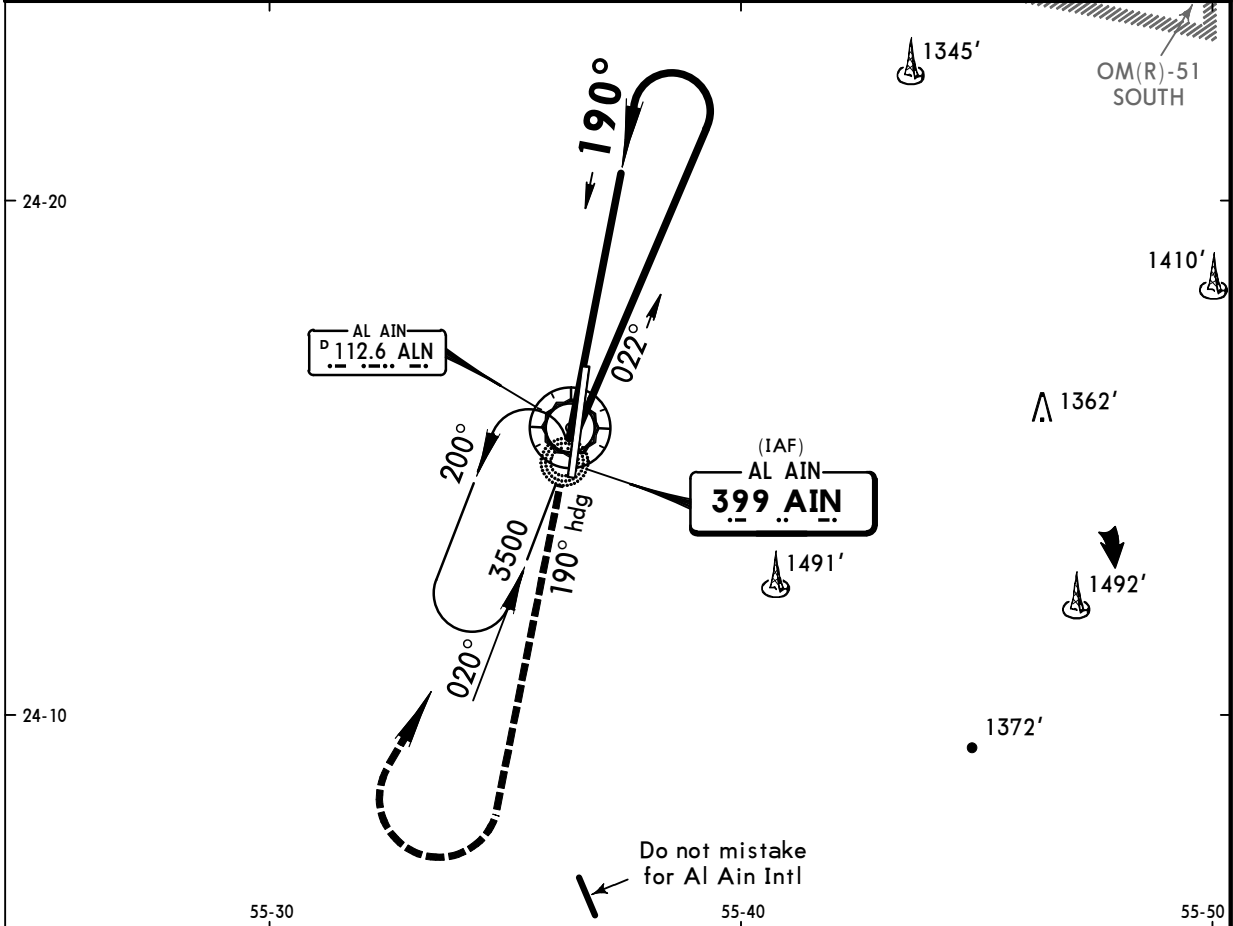
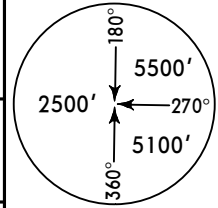
CAT A & B

AL AIN, UAE  
NDB Rwy 19

NDB AIN <b>399</b>	Final Apch Crs <b>190°</b>	Minimum Alt No FAF	MDA(H) <b>1430' (588')</b>	Apt Elev <b>869'</b> RWY <b>842'</b>
--------------------------	----------------------------------	-----------------------	-------------------------------	---

MISSED APCH: Climb on heading 190° for 3 Min, then turn RIGHT to join holding at 3500'.

Alt Set: hPa Rwy Elev: 30 hPa Trans level: FL 150 Trans alt: 13000'



MAP at NDB	HIALS PAPI PAPI	3 Min ↑ on 190° hdg
------------	--------------------	------------------------------

JAR-OPS		STRAIGHT-IN LANDING RWY 19		CIRCLE-TO-LAND	
		MDA(H) <b>1430' (588')</b>			
		ALS out	Max Kts	MDA(H)	VIS
A	RVR 1400m	RVR 1500m	100	1430' (588')	1500m
B	RVR 1500m		135	1430' (588')	1600m
C	NOT AUTHORIZED		C	NOT AUTHORIZED	
D	NOT AUTHORIZED		D	NOT AUTHORIZED	

1 Circling height based on rwy 19 threshold elevation of 842'.