

OMDW  
AL MAKTOUM INTL

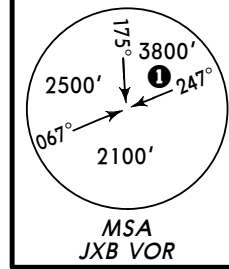
21 MAY 10 1

AL MAKTOUM, UAE

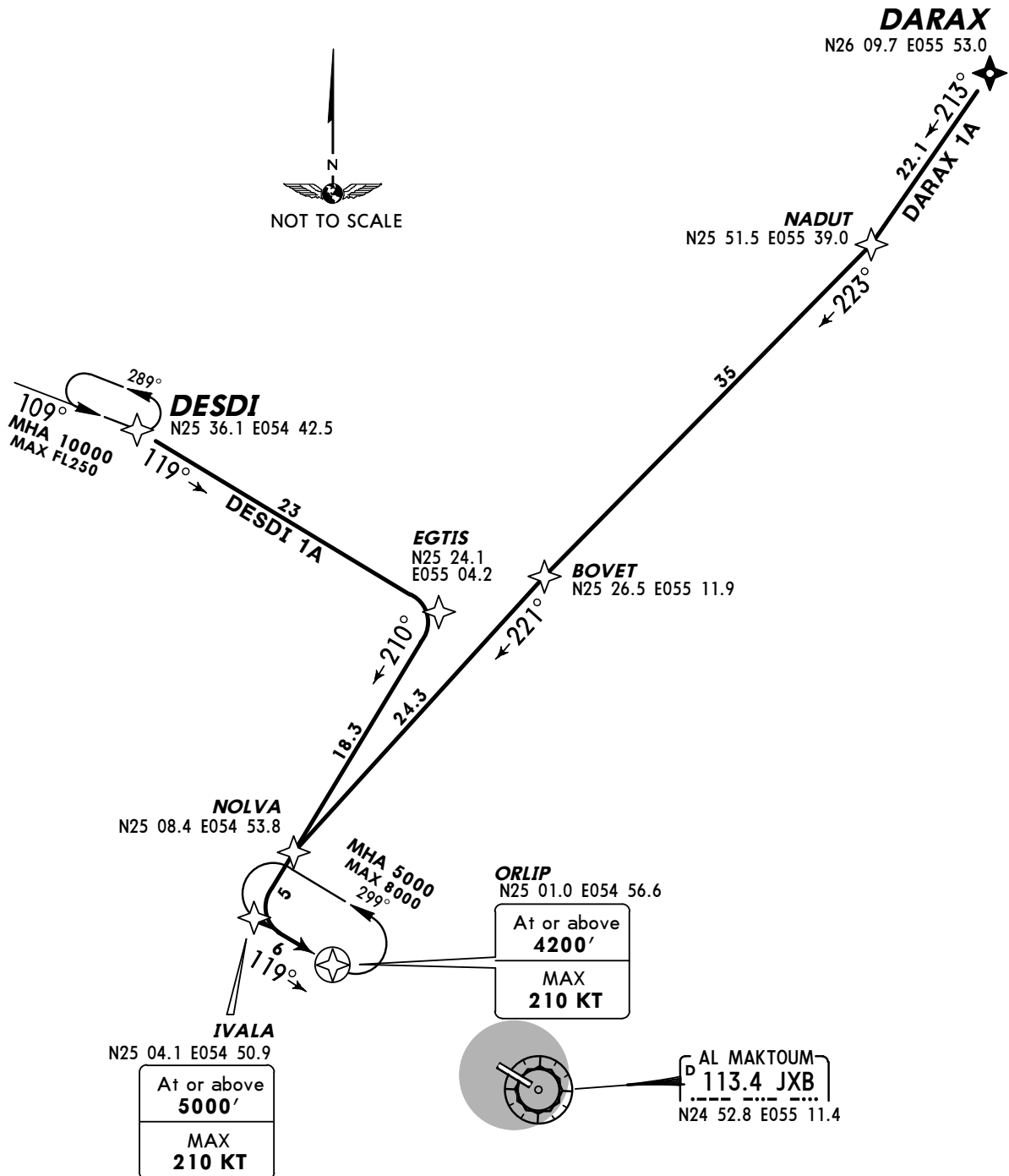
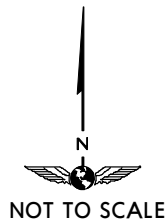
**RNAV STAR**

Apt Elev 170'  
Alt Set: hPa Trans level: FL150 Trans alt: 13000'  
On initial call to AL MAKTOUM Radar state callsign, passing level and, if applicable, STAR designator.

**DARAX 1A [DARA1A]  
DESDI 1A [DESD1A]  
RWY 12 RNAV ARRIVALS  
RNAV 1  
FROM NORTH**



① 2500' within 14 NM



| STAR            | ROUTING   |
|-----------------|---|
| <b>DARAX 1A</b> | DARAX - NADUT - BOVET - NOLVA - IVALA (5000'+;K210-) - ORLIP (4200'+; K210-). |
| <b>DESDI 1A</b> | DESDI - EGTIS - IVALA (5000'+;K210-) - ORLIP (4200'+; K210-).                 |

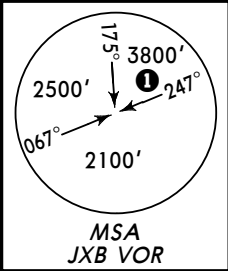
OMDW  
AL MAKTOUM INTL

21 MAY 10 2

AL MAKTOUM, UAE  
RNAV STAR

Apt Elev  
170'

Alt Set: hPa Trans level: FL150 Trans alt: 13000'  
On initial call to AL MAKTOUM Radar state callsign, passing level and, if applicable, STAR designator.

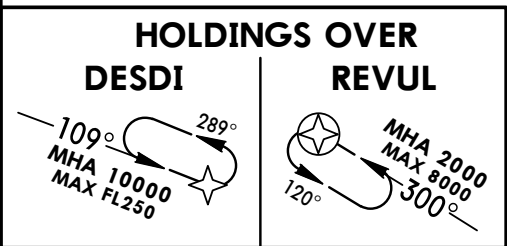


**DARAX 1Z [DARA1Z]  
DESDI 1Z [DESD1Z]  
RWY 30 RNAV ARRIVALS**  
RNAV 1  
FROM NORTH

**DARAX**  
N26 09.7 E055 53.0

**PURBU**  
N25 55.3 E055 51.6

① 2500' within 14 NM



**DESDI**  
N25 36.1 E054 42.5

**PUVAL**  
N25 36.0 E055 43.0

**RAGSO**  
N25 26.4 E055 38.6

**GINRU**  
N25 21.1 E055 14.6  
At or above  
13000'

**NOTRU**  
N25 07.6 E055 10.9  
DARAX 1Z  
MAX  
250 KT

**OTOLO**  
N24 59.9 E055 05.7  
MAX  
250 KT

**AL MAKTOUM**  
D 113.4 JXB  
N24 52.8 E055 11.4

**BONUN**  
N24 46.4 E055 30.1  
At or above  
4000'  
MAX  
210 KT

**REVUL**  
N24 47.7 E055 20.7  
At or above  
2000'  
MAX  
210 KT

**GEXIK**  
N24 46.6 E055 22.7  
MAX  
210 KT

**ODBEV**  
N24 41.8 E055 31.3  
MAX  
210 KT

**DW702**  
N24 40.7 E055 26.2  
MAX  
210 KT

| STAR            | ROUTING  |
|-----------------|--|
| <b>DARAX 1Z</b> | DARAX - PURBU - PUVAL - RAGSO - UKIXA - NOTRU (K250-) - OTOLO (K250-) - BONUN (4000'+; K210-) - ODBEV (K210-) - DW702 (K210-) - GEXIK (K210-) - REVUL (2000'+; K210-). |
| <b>DESDI 1Z</b> | DESDI - GINRU (13000'+) - NOTRU - OTOLO (K250-) - BONUN (4000'+; K210-) - ODBEV (K210-) - DW702 (K210-) - GEXIK (K210-) - REVUL (2000'+; K210-).                       |

OMDW  
AL MAKTOUM INTL

21 MAY 10

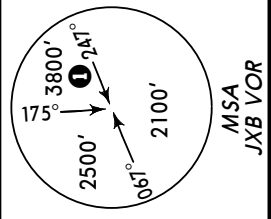
3

AL MAKTOUM, UAE

RNAV STAR

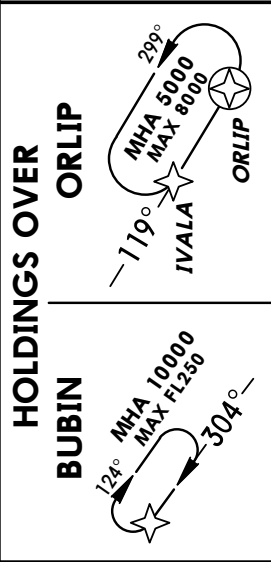
Apt Elev  
170'

Alt Set: hPa Trans level: FL150 Trans alt: 13000'  
On initial call to AL MAKTOUM Radar state callsign, passing level and, if applicable, STAR designator.



MSA JXB VOR  
2500' within 14 NM

**BUBIN 1A [BUBI1A]  
MIADA 1A [MIAD1A]  
RWY 12 RNAV ARRIVALS**  
RNAV 1  
FROM EAST & SOUTH

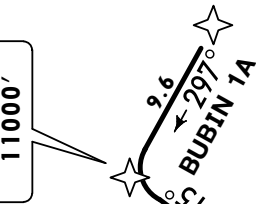


HOLDINGS OVER

ORLIP

BUBIN

SODAD  
N25 02.3 E055 57.4  
At or below  
11000'



BUBIN  
N24 57.7 E056 06.7

LOROT  
N24 52.3 E055 49.3



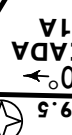
BONJUN  
N24 46.4 E055 30.1



NOT TO SCALE

ITPUT  
N25 04.0 E054 58.3  
MAX  
210 KT

MIADA  
N24 51.2 E054 57.6



RARMA  
N25 10.3 E054 56.6  
MAX  
210 KT

BORAP  
N25 08.7 E054 49.7  
MAX  
210 KT

IVALA  
N25 04.1 E054 50.9  
At or above  
5000'  
MAX  
210 KT

ORLIP  
N25 01.0 E054 56.6  
At or above  
4200'  
MAX  
210 KT

ALRIG  
N24 54.4 E054 58.0  
MAX  
250 KT



AL MAKTOUM  
N24 52.8 E055 11.4



JXB  
N24 52.8 E055 11.4

| STAR            | ROUTING   |
|-----------------|---|
| <b>BUBIN 1A</b> | BUBIN - SODAD (11000'-) - LOROT - BONJUN - ITPUT (K210-) - RARMA (K210-) - BORAP (K210-) - IVALA (5000'+; K210-) - ORLIP (4200'+; K210-). |
| <b>MIADA 1A</b> | MIADA - ALRIG (K250-) - ITPUT (K210-) - RARMA (K210-) BORAP (K210-) - IVALA (5000'+; K210-) - ORLIP (4200'+; K210-).                      |

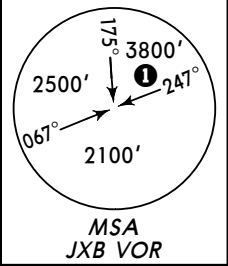


OMDW  
AL MAKTOUM INTL

21 MAY 10 5

AL MAKTOUM, UAE  
**RNAV SID**

Apt Elev 170'  
Trans level: FL150 Trans alt: 13000'  
On initial call to AL MAKTOUM Radar state callsign, passing level, and if applicable, SID designator.



① 2500' within 14 NM

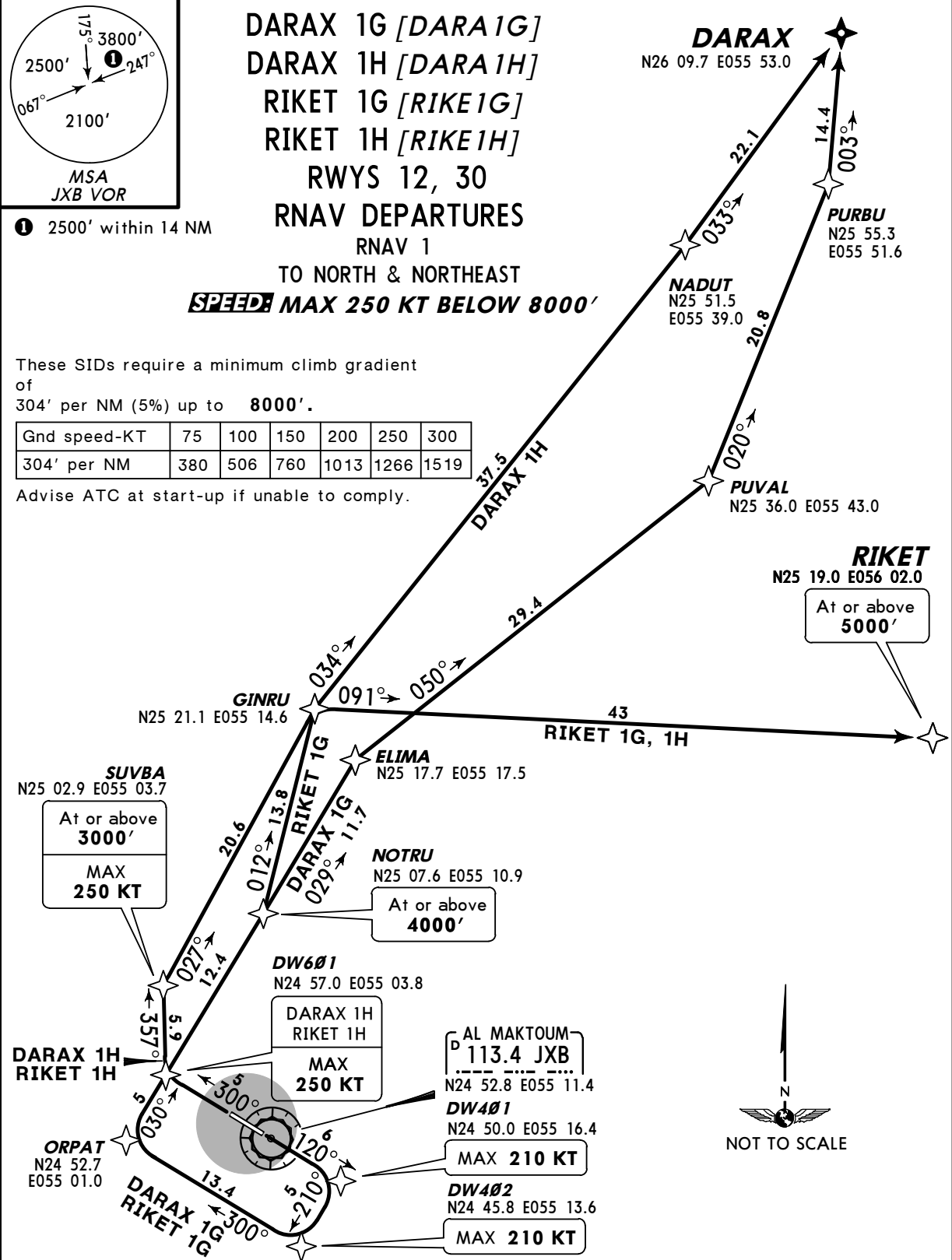
**DARAX 1G [DARA1G]**  
**DARAX 1H [DARA1H]**  
**RIKET 1G [RIKE1G]**  
**RIKET 1H [RIKE1H]**  
**RWYS 12, 30**  
**RNAV DEPARTURES**

**RNAV 1**  
**TO NORTH & NORTHEAST**  
**SPEED MAX 250 KT BELOW 8000'**

These SIDs require a minimum climb gradient of 304' per NM (5%) up to 8000'.

|              |     |     |     |      |      |      |
|--------------|-----|-----|-----|------|------|------|
| Gnd speed-KT | 75  | 100 | 150 | 200  | 250  | 300  |
| 304' per NM  | 380 | 506 | 760 | 1013 | 1266 | 1519 |

Advise ATC at start-up if unable to comply.



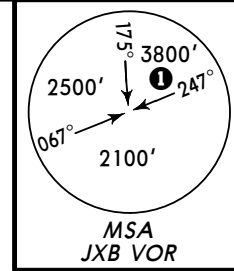
Initial climb clearance 3000', further climb when instructed by AL MAKTOUM Radar

| SID             | RWY       | ROUTING   |
|-----------------|-----------|---|
| <b>DARAX 1G</b> | <b>12</b> | DW401 (K210-) - DW402 (K210-) - ORPAT - NOTRU (4000'+) - ELIMA - PUVAL - PURBU - DARAX. |
| <b>DARAX 1H</b> | <b>30</b> | DW601 (K250-) - SUVBA (3000'+; K250-) - GINRU - NADUT - DARAX.                          |
| <b>RIKET 1G</b> | <b>12</b> | DW401 (K210-) - DW402 (K210-) - ORPAT - NOTRU (4000'+) - GINRU - RIKET (5000'+).        |
| <b>RIKET 1H</b> | <b>30</b> | DW601 (K250-) - SUVBA (3000'+; K250-) - GINRU - RIKET (5000'+).                         |

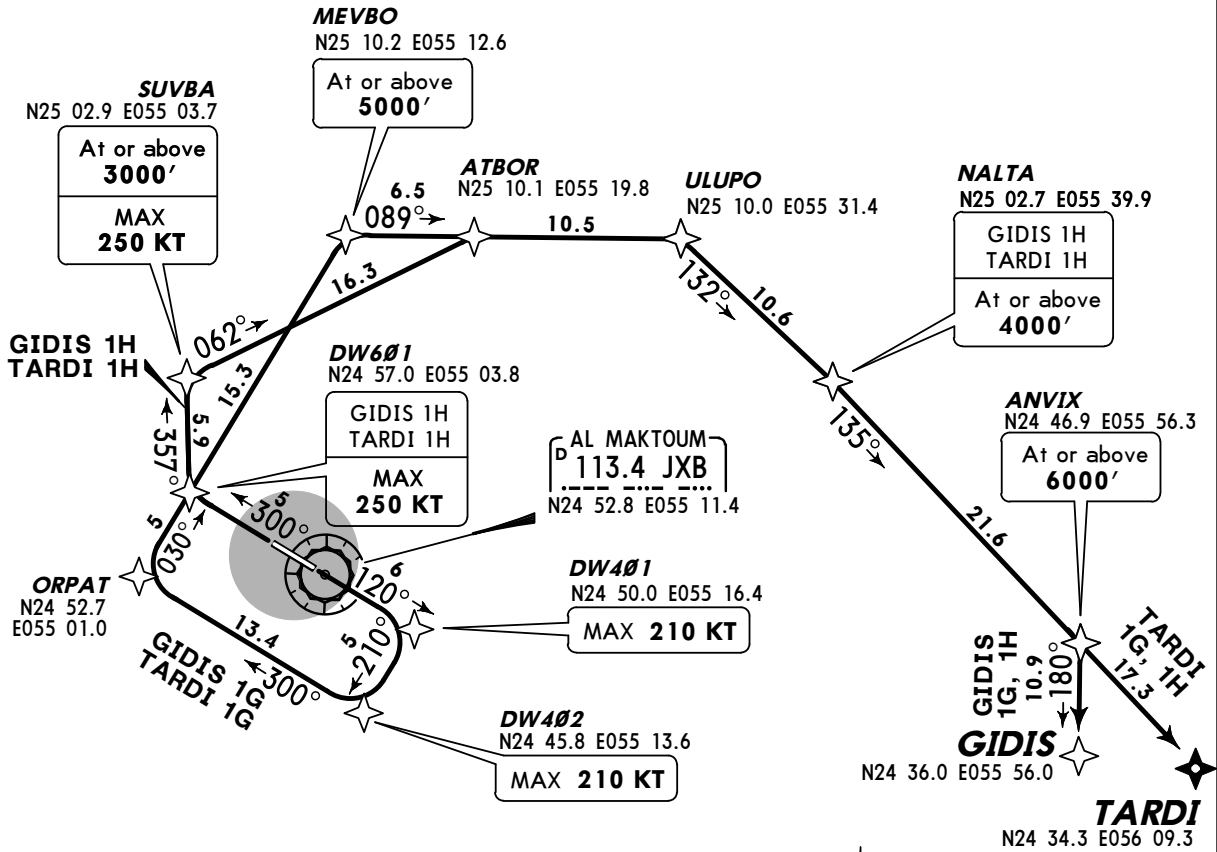
Apt Elev 170'  
Trans level: FL150 Trans alt: 13000'  
On initial call to AL MAKTOUM Radar state callsign, passing level, and if applicable, SID designator.

**GIDIS 1G [GIDI1G]  
GIDIS 1H [GIDI1H]  
TARDI 1G [TARD1G]  
TARDI 1H [TARD1H]**  
**RWYS 12, 30 RNAV DEPARTURES**  
**RNAV 1**  
**TO SOUTHEAST**

**~~SPEED~~ MAX 250 KT BELOW 8000'**



**1** 2500' within 14 NM



These SIDs require a minimum climb gradient of 304' per NM (5%) up to 8000'.

|              |     |     |     |      |      |      |
|--------------|-----|-----|-----|------|------|------|
| Gnd speed-KT | 75  | 100 | 150 | 200  | 250  | 300  |
| 304' per NM  | 380 | 506 | 760 | 1013 | 1266 | 1519 |

Advise ATC at start-up if unable to comply.



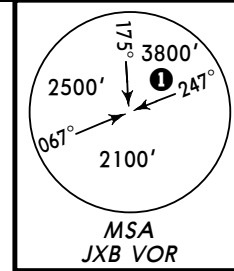
Initial climb clearance 3000', further climb when instructed by AL MAKTOUM Radar

| SID             | RWY       | ROUTING  |
|-----------------|-----------|--|
| <b>GIDIS 1G</b> | <b>12</b> | DW401 (K210-) - DW402 (K210-) - ORPAT - MEVBO (5000'+) - ULUPO - NALTA - ANVIX (6000'+) - GIDIS. |
| <b>GIDIS 1H</b> | <b>30</b> | DW601 (K250-) - SUVBA (3000'+; K250-) - ATBOR - ULUPO - NALTA (4000'+) - ANVIX (6000'+) - GIDIS. |
| <b>TARDI 1G</b> | <b>12</b> | DW401 (K210-) - DW402 (K210-) - ORPAT - MEVBO (5000'+) - ULUPO - NALTA - ANVIX (6000'+) - TARDI. |
| <b>TARDI 1H</b> | <b>30</b> | DW601 (K250-) - SUVBA (3000'+; K250-) - ATBOR - ULUPO - NALTA (4000'+) - ANVIX (6000'+) - TARDI. |

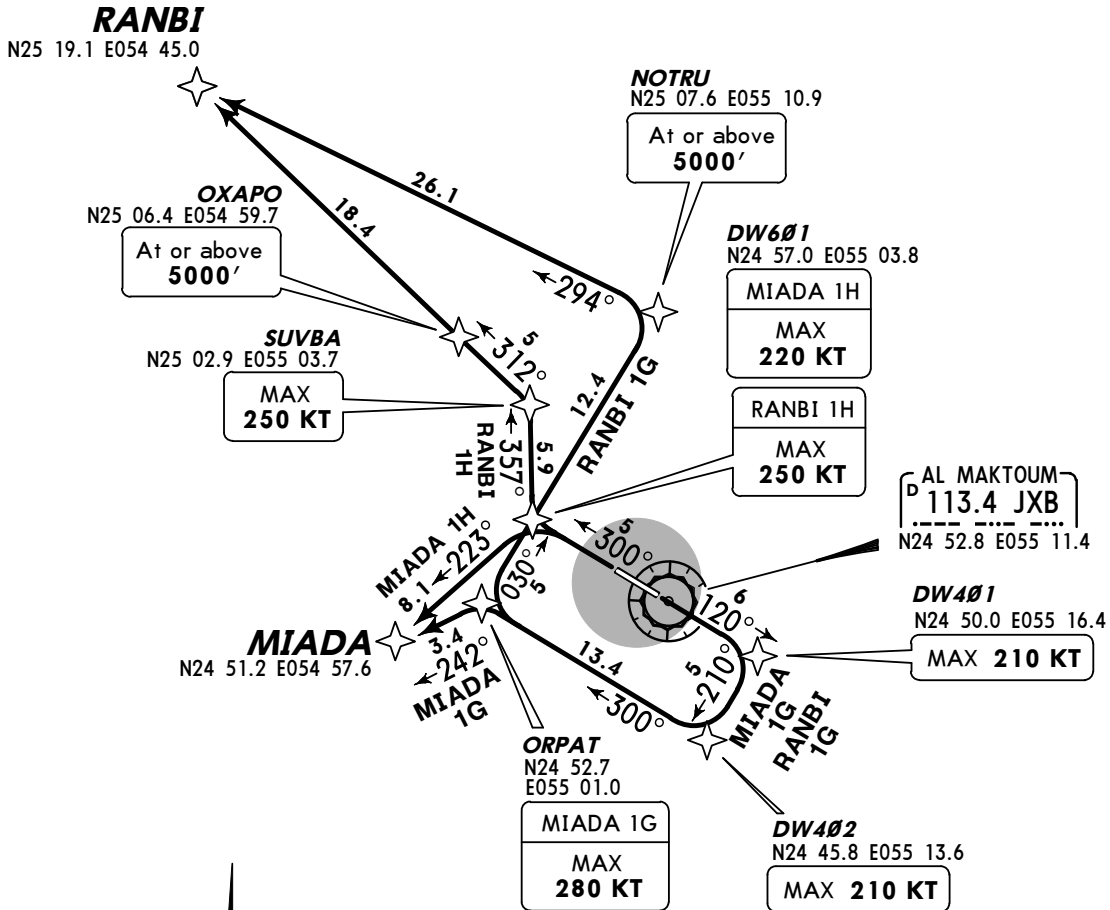
Apt Elev  
**170'**

Trans level: FL150 Trans alt: 13000'  
On initial call to AL MAKTOUM Radar state callsign, passing level, and if applicable, SID designator.

**MIADA 1G [MIAD1G]  
MIADA 1H [MIAD1H]  
RANBI 1G [RANB1G]  
RANBI 1H [RANB1H]  
RWYS 12, 30 RNAV DEPARTURES  
RNAV 1  
TO SOUTHWEST & NORTHWEST  
~~SPEED~~ **MAX 250 KT BELOW 8000'****



① 2500' within 14 NM



These SIDs require a minimum climb gradient of 304' per NM (5%) up to **8000'**.

| Gnd speed-KT | 75  | 100 | 150 | 200  | 250  | 300  |
|--------------|-----|-----|-----|------|------|------|
| 304' per NM  | 380 | 506 | 760 | 1013 | 1266 | 1519 |

Advice ATC at start-up if unable to comply.

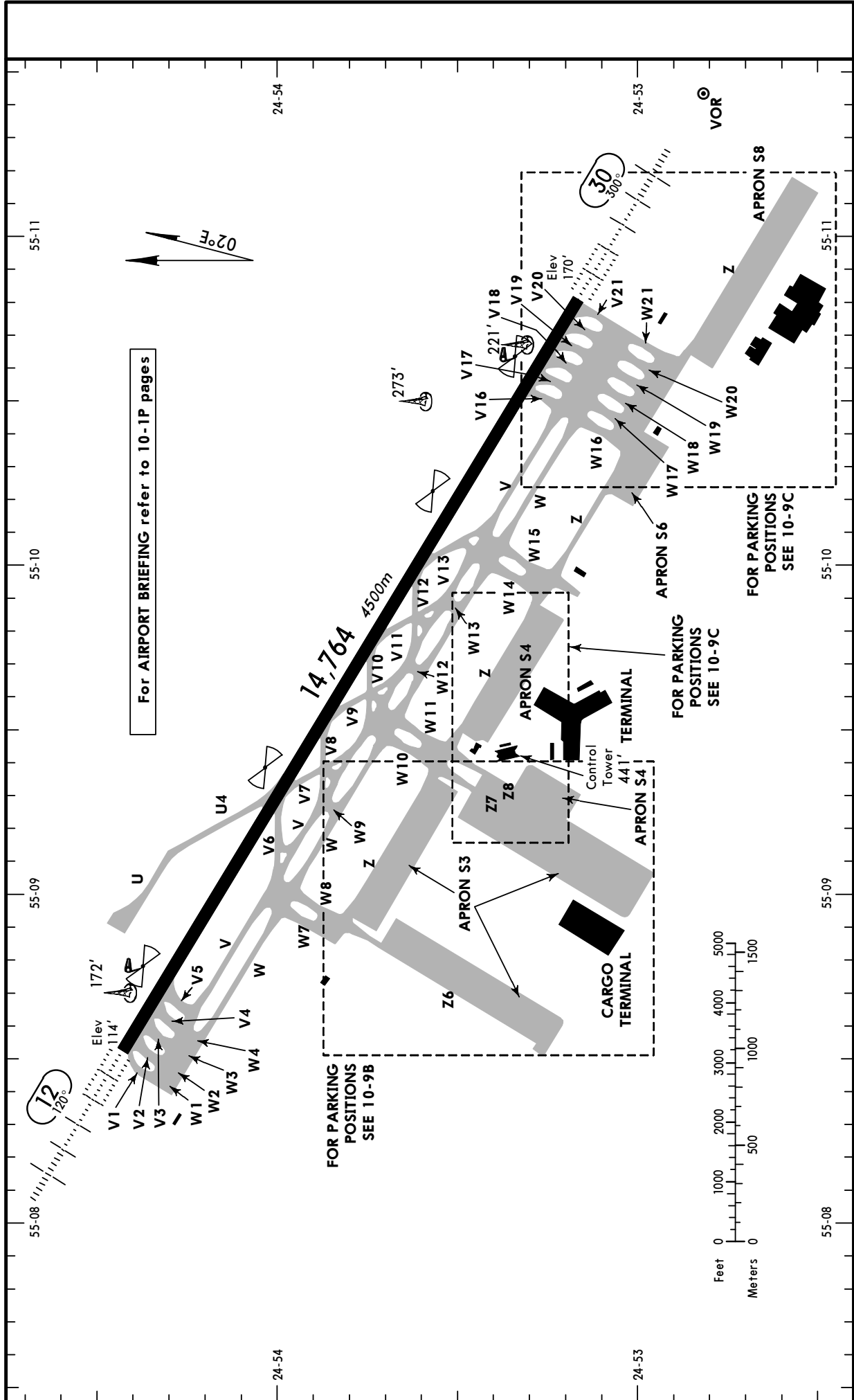
Initial climb clearance **3000'**,  
further climb when instructed by AL MAKTOUM Radar

| SID             | RWY       | ROUTING  |
|-----------------|-----------|--|
| <b>MIADA 1G</b> | <b>12</b> | DW401 (K210-) - DW402 (K210-) - ORPAT (K280-) - MIADA.                   |
| <b>MIADA 1H</b> | <b>30</b> | DW601 (K220-) - MIADA.   |
| <b>RANBI 1G</b> | <b>12</b> | DW401 (K210-) - DW402 (K210-) - ORPAT - NOTRU ( <b>5000'+</b> ) - RANBI. |
| <b>RANBI 1H</b> | <b>30</b> | DW601 (K250-) - SUVBA (K250-) - OXAPO ( <b>5000'+</b> ) - RANBI.         |

OMDW  
Apt Elev 170'  
N24 55.1 E055 10.5

21 MAY 10 (8)

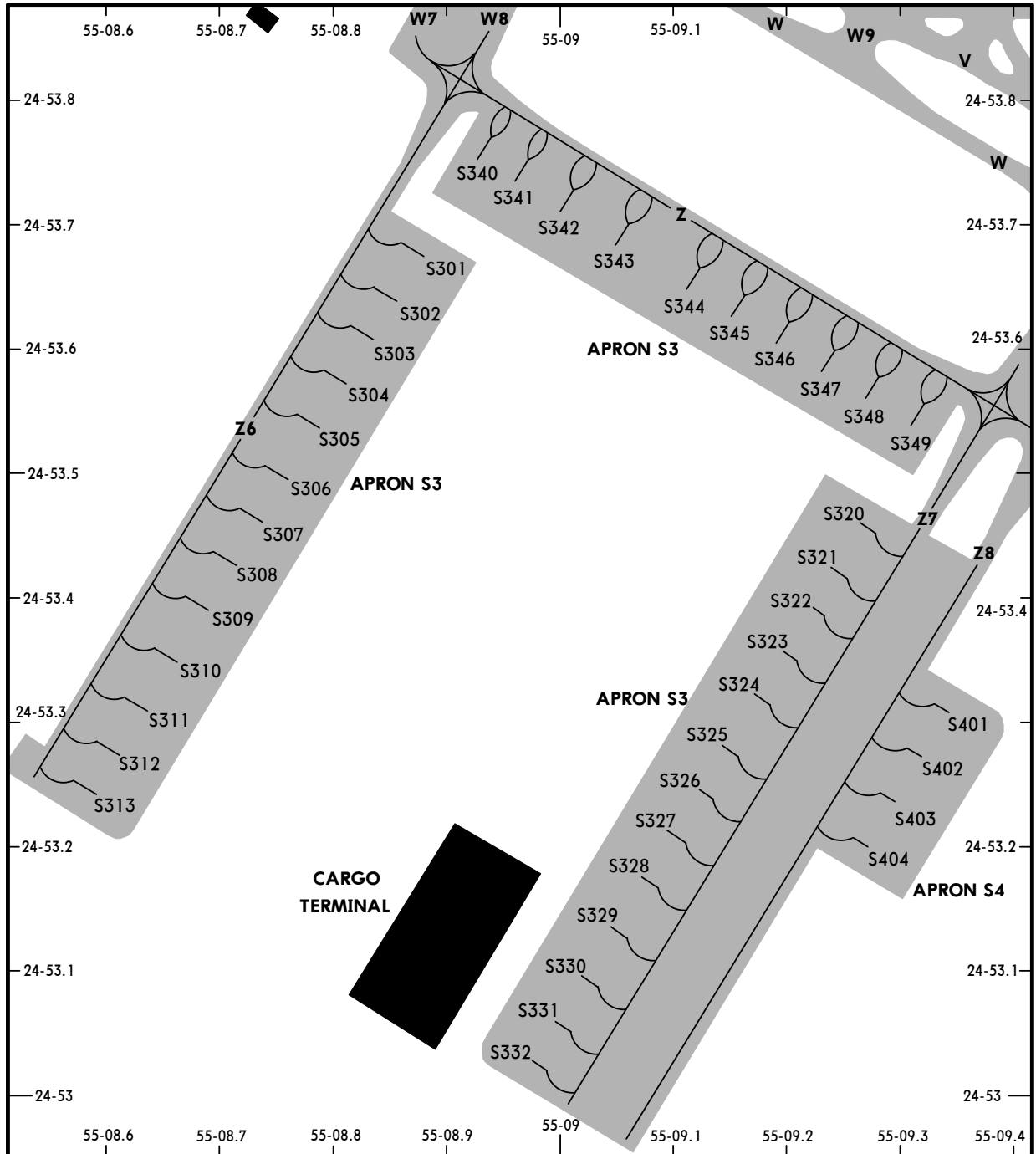
AL MAKTOUM, UAE  
AL MAKTOUM INTL



OMDW

AL MAKTOUM, UAE  
AL MAKTOUM INTL

21 MAY 10 9



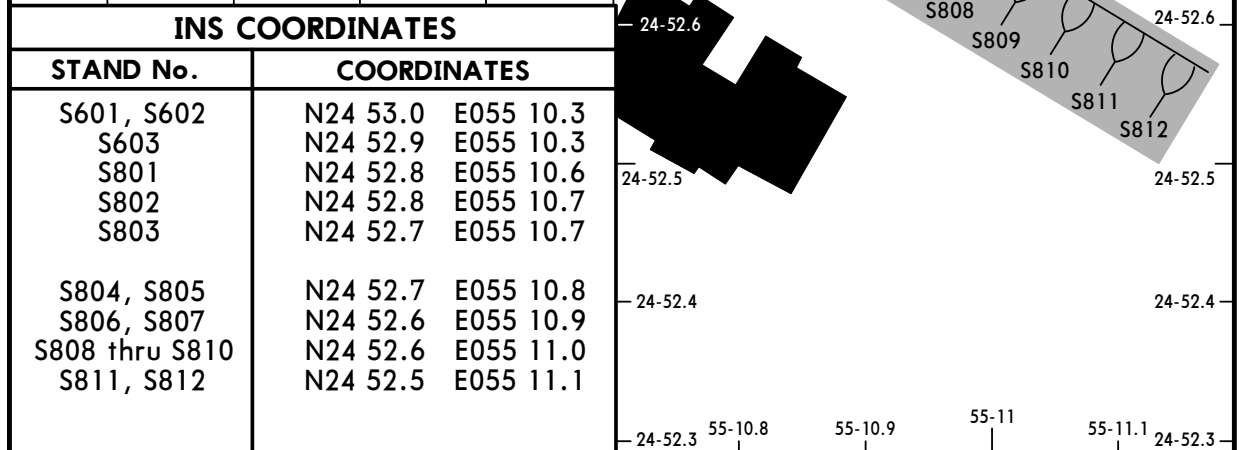
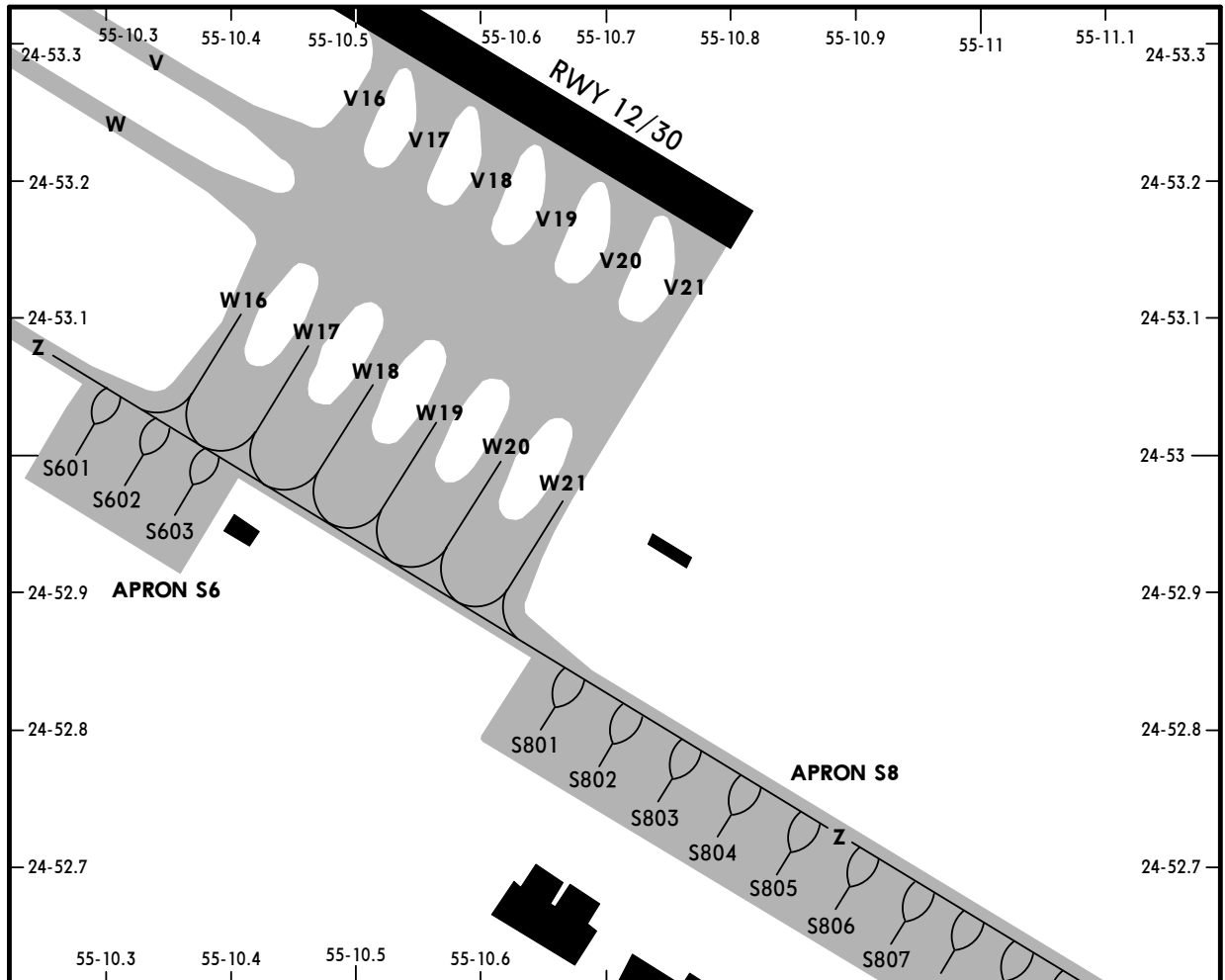
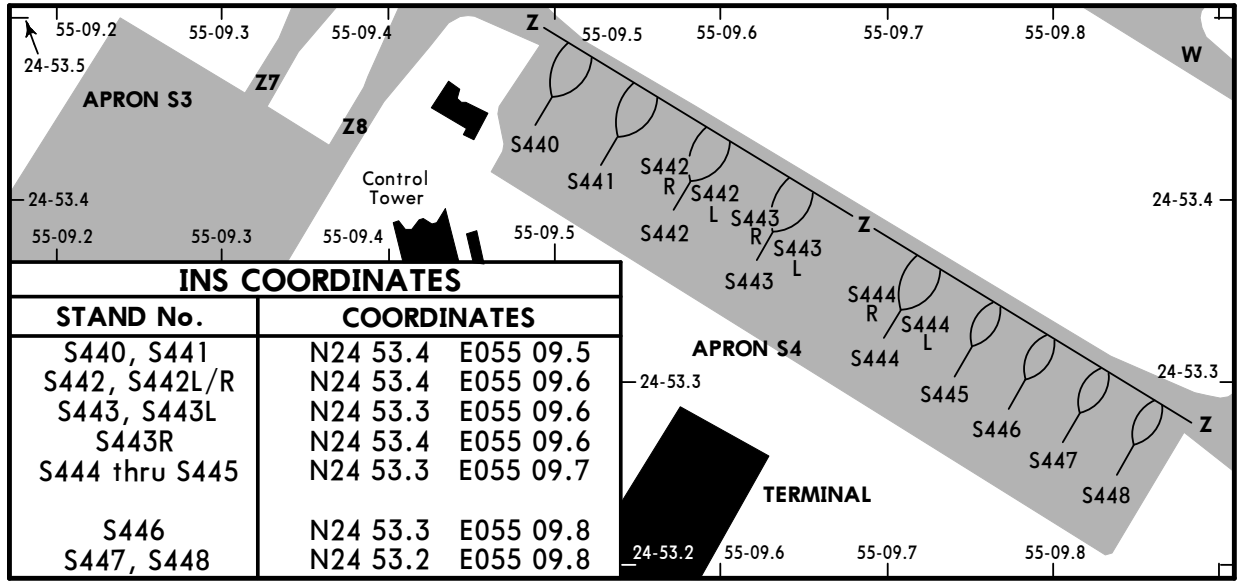
**INS COORDINATES**

| STAND No.      | COORDINATES        | STAND No.      | COORDINATES        |
|----------------|--------------------|----------------|--------------------|
| S301           | N24 53.7 E055 08.9 | S332           | N24 53.0 E055 09.0 |
| S302, S303     | N24 53.6 E055 08.9 | S340           | N24 53.7 E055 08.9 |
| S304           | N24 53.6 E055 08.8 | S341 thru S343 | N24 53.7 E055 09.0 |
| S305, S306     | N24 53.5 E055 08.8 | S344, S345     | N24 53.6 E055 09.1 |
| S307           | N24 53.4 E055 08.8 | S346, S347     | N24 53.6 E055 09.2 |
| S308, S309     | N24 53.4 E055 08.7 | S348, S349     | N24 53.5 E055 09.3 |
| S310, S311     | N24 53.3 E055 08.7 | S401           | N24 53.3 E055 09.4 |
| S312           | N24 53.3 E055 08.6 | S402           | N24 53.3 E055 09.3 |
| S313           | N24 53.2 E055 08.6 | S403, S404     | N24 53.2 E055 09.3 |
| S320           | N24 53.5 E055 09.2 |                |                    |
| S321 thru S323 | N24 53.4 E055 09.2 |                |                    |
| S324           | N24 53.3 E055 09.2 |                |                    |
| S325, S326     | N24 53.3 E055 09.1 |                |                    |
| S327, S328     | N24 53.2 E055 09.1 |                |                    |
| S329 thru S331 | N24 53.1 E055 09.0 |                |                    |

OMDW

AL MAKTOUM, UAE  
AL MAKTOUM INTL

21 MAY 10 10

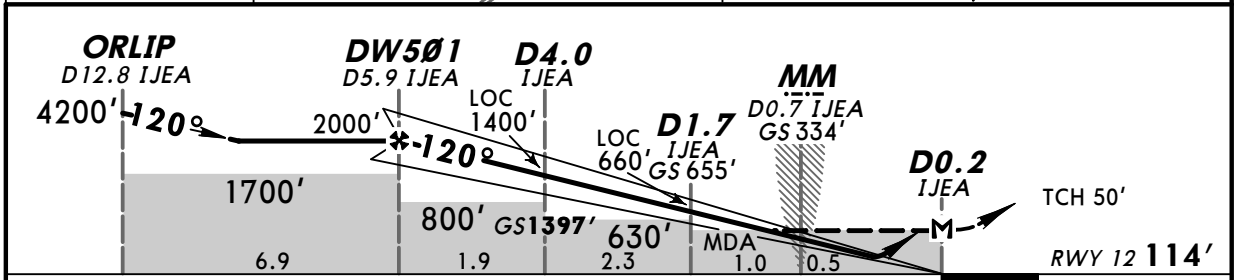
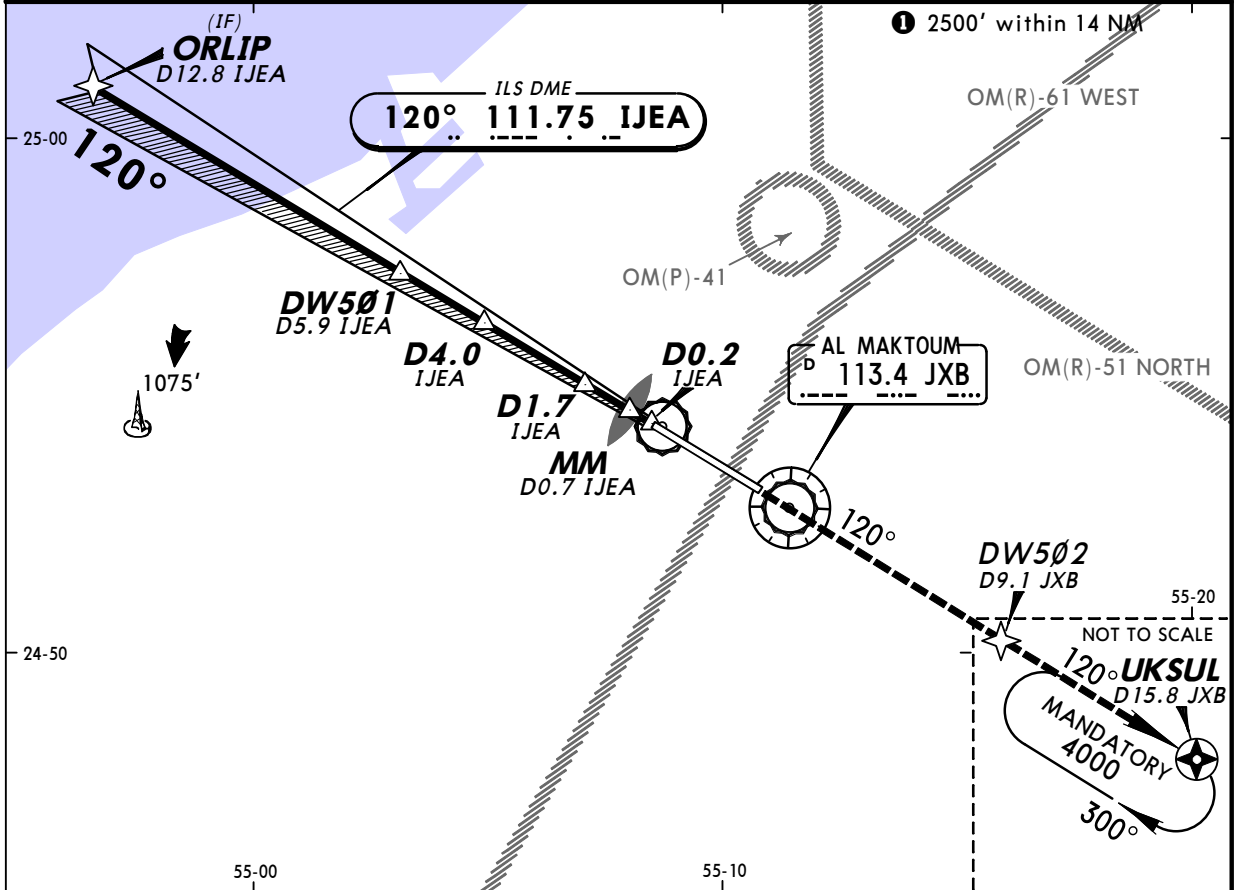


OMDW  
AL MAKTOUM INTL

21 MAY 10 (11)

AL MAKTOUM, UAE  
ILS Rwy 12

|  |                                  |  |                                      |                               |                    |
|--|----------------------------------|--|--------------------------------------|-------------------------------|--------------------|
| LOC<br>IJE A<br><b>111.75</b>  | Final<br>Apch Crs<br><b>120°</b> | GS<br><b>D4.0 IJE A</b><br>1397' (1283') | ILS<br>DA(H)<br>Refer to<br>Minimums | Apt Elev 170'<br><br>RWY 114' | <p>MSA JXB VOR</p> |
| <p><b>MISSED APCH:</b> Climb on 120° to 4000' to DW502, then continue to UKSUL and hold.</p>   |                                  |  |                                      |                               |                    |
| <p>Alt Set: hPa      Rwy Elev: 4 hPa      Trans level: FL150      Trans alt: 13000'</p> <p>1. <b>DME REQUIRED.</b> 2. ILS DME reads zero at TDZ.</p> |                                  |  |                                      |                               |                    |



|                                      |     |     |     |     |     |     |  |
|--------------------------------------|-----|-----|-----|-----|-----|-----|--|
| Gnd speed-Kts                        | 70  | 90  | 100 | 120 | 140 | 160 |  |
| ILS GS or<br>LOC Descent Angle 3.00° | 377 | 484 | 538 | 646 | 753 | 861 |  |
| MAP at D0.2 IJE A                    |     |     |     |     |     |     |  |

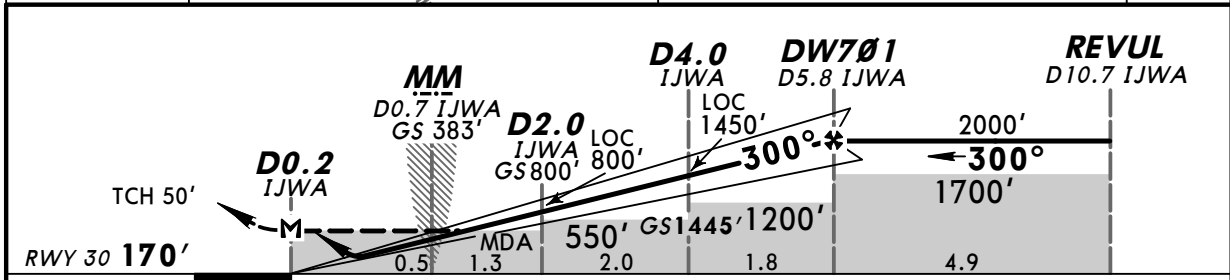
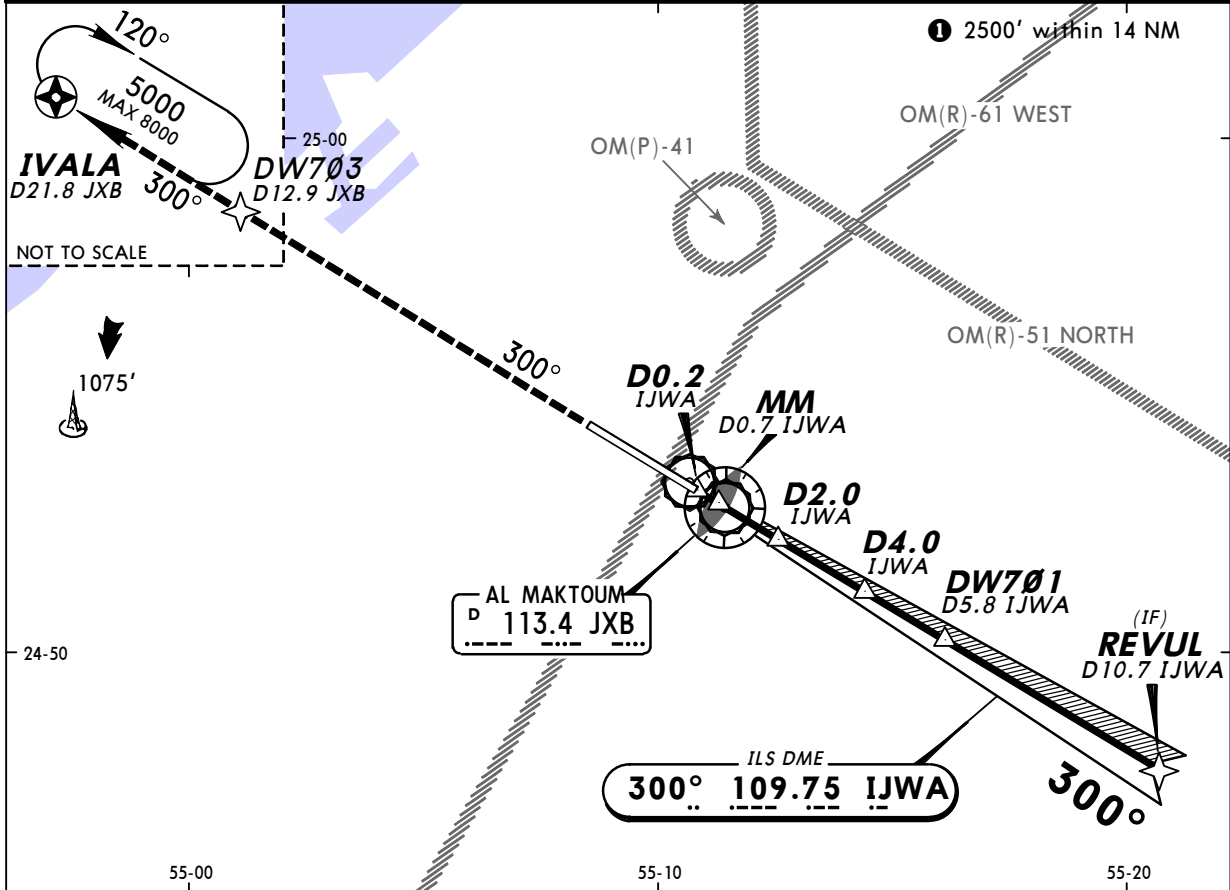
| JAR-OPS STRAIGHT-IN LANDING RWY 12           |          |                           |           |
|--|----------|---------------------------|-----------|
| DA(H) ILS C: <b>323'</b> (209')              |          | LOC (GS out)              |           |
| AB: <b>314'</b> (200') D: <b>333'</b> (219') |          | MDA(H) <b>420'</b> (306') |           |
|  | FULL     | ALS out                   | ALS out   |
| A  | RVR 550m | RVR 1000m                 | RVR 900m  |
| B  |          |                           | RVR 1500m |
| C  |          |                           | RVR 1800m |
| D  | RVR 600m |                           | RVR 2000m |

OMDW  
AL MAKTOUM INTL

21 MAY 10 (12)

AL MAKTOUM, UAE  
ILS Rwy 30

|   |                                  |   |                                    |                           |                    |
|---|----------------------------------|---|------------------------------------|---------------------------|--------------------|
| LOC<br>IJWA<br><b>109.75</b>  | Final<br>Apch Crs<br><b>300°</b> | GS<br><b>D4.0 IJWA</b><br>1445' (1275') | ILS<br>DA(H)<br><b>370' (200')</b> | Apt Elev 170'<br>RWY 170' | <p>MSA JXB VOR</p> |
| <b>MISSED APCH: Climb on 300° to 5000', then continue to IVALA and hold.</b>  |                                  |   |                                    |                           |                    |
| Alt Set: hPa      Rwy Elev: 6 hPa      Trans level: FL150      Trans alt: 13000'<br>1. <b>DME REQUIRED.</b> 2. ILS DME reads zero at TDZ. |                                  |   |                                    |                           |                    |



|                                      |     |     |     |     |     |     |   |
|--------------------------------------|-----|-----|-----|-----|-----|-----|---|
| Gnd speed-Kts                        | 70  | 90  | 100 | 120 | 140 | 160 | HIALS-II<br>REIL PAPI PAPI<br>5000' on 300° |
| ILS GS or<br>LOC Descent Angle 3.00° | 377 | 484 | 538 | 646 | 753 | 861 |   |
| MAP at D0.2 IJWA                     |     |     |     |     |     |     |   |

|                          |          |                           |           |                            |  |                           |           |
|--------------------------|----------|---------------------------|-----------|----------------------------|--|---------------------------|-----------|
| <b>JAR-OPS</b>           |          |                           |           | STRAIGHT-IN LANDING RWY 30 |  |                           |           |
| ILS                      |          | LOC (GS out)              |           | ILS                        |  | LOC (GS out)              |           |
| DA(H) <b>370' (200')</b> |          | MDA(H) <b>470' (300')</b> |           | DA(H) <b>370' (200')</b>   |  | MDA(H) <b>470' (300')</b> |           |
| FULL                     |          | ALS out                   |           | FULL                       |  | ALS out                   |           |
| A                        |          |                           | RVR 900m  |                            |  |                           | RVR 1500m |
| B                        |          |                           | RVR 1000m |                            |  |                           | RVR 1800m |
| C                        | RVR 550m | RVR 1000m                 |           |                            |  |                           | RVR 2000m |
| D                        |          |                           | RVR 1400m |                            |  |                           |           |