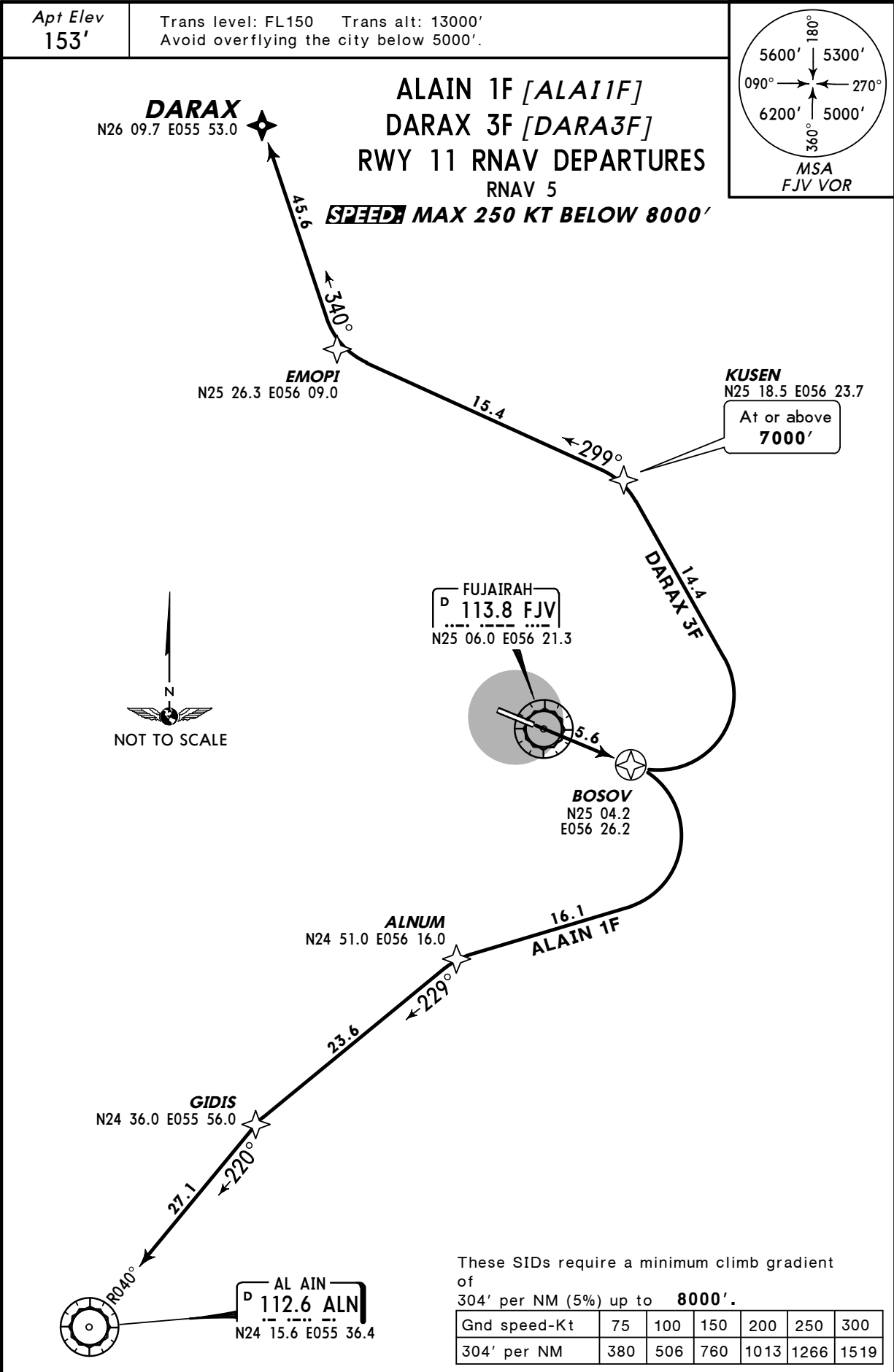


OMFJ/FJR  
FUJAIRAH INTL

17 JUL 09 1

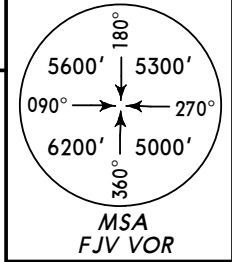
FUJAIRAH, UAE

**RNAV SID**



Apt Elev  
**153'**

Trans level: FL150 Trans alt: 13000'  
Avoid overflying the city below 5000'.



**DARAX**  
N26 09.7 E055 53.0

**ALAIN 1F [ALAI1F]  
DARAX 3F [DARA3F]  
RWY 11 RNAV DEPARTURES  
RNAV 5**

**SPEED: MAX 250 KT BELOW 8000'**

**EMOPI**  
N25 26.3 E056 09.0

**KUSEN**  
N25 18.5 E056 23.7  
At or above  
**7000'**

FUJAIRAH  
D 113.8 FJV  
N25 06.0 E056 21.3

**BOSOV**  
N25 04.2  
E056 26.2

**ALNUM**  
N24 51.0 E056 16.0

**GIDIS**  
N24 36.0 E055 56.0

AL AIN  
D 112.6 ALN  
N24 15.6 E055 36.4

These SIDs require a minimum climb gradient of 304' per NM (5%) up to **8000'**.

Gnd speed-Kt	75	100	150	200	250	300
304' per NM	380	506	760	1013	1266	1519

Initial climb clearance **7000'**, further climb as instructed by ATC.

SID	ROUTING
<b>ALAIN 1F</b>	BOSOV - ALNUM - GIDIS - ALN.
<b>DARAX 3F</b>	BOSOV - KUSEN ( <b>7000'+</b> ) - EMOPI - DARAX.

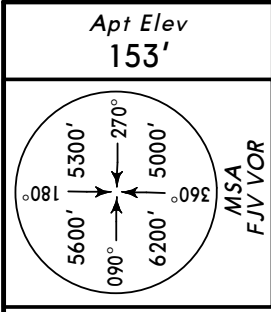
OMFJ/FJR  
FUJAIRAH INTL

17 JUL 09

2

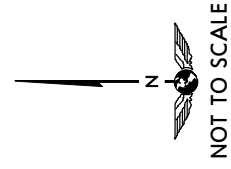
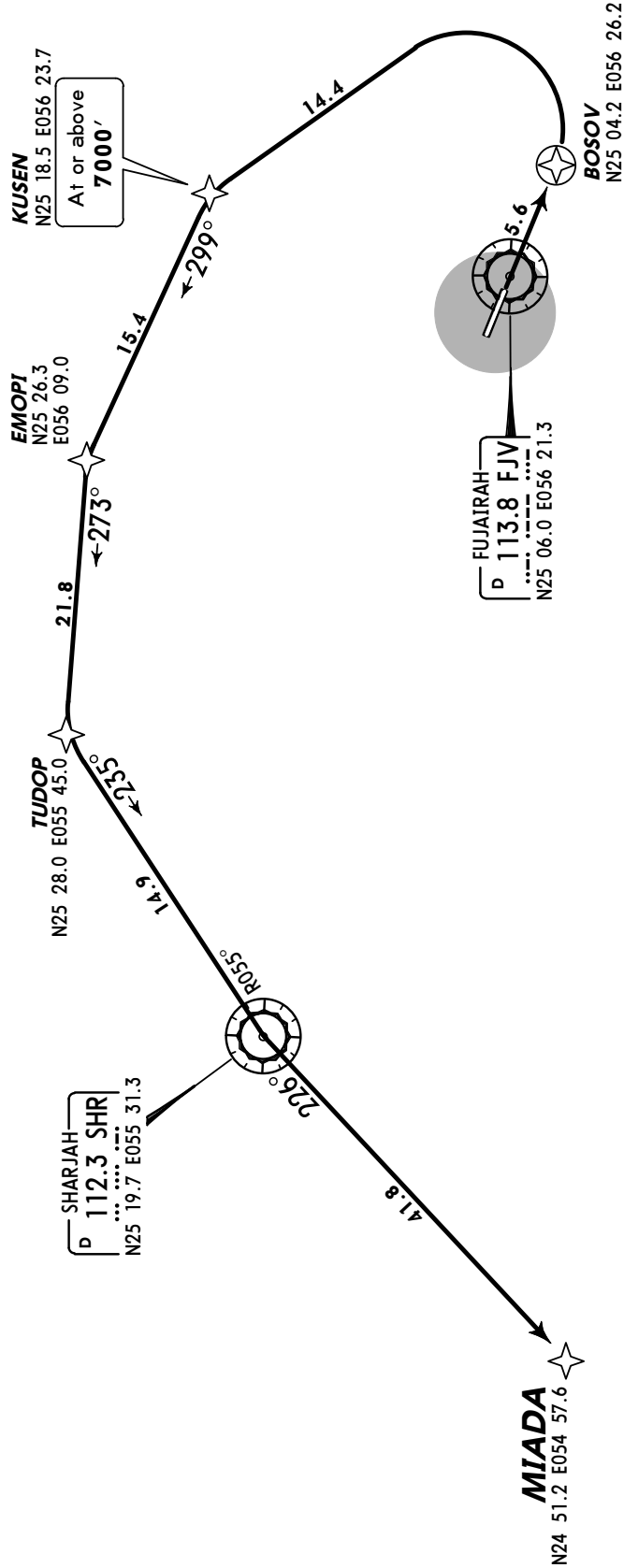
FUJAIRAH, UAE

RNAV SID



Trans level: FL150 Trans alt: 13000'  
Avoid overflying the city below 5000'.

**MIADA 3F [MIAD3F]**  
**RWY 11 RNAV DEPARTURE**  
RNAV 5  
**SPEED MAX 250 KT BELOW 8000'**



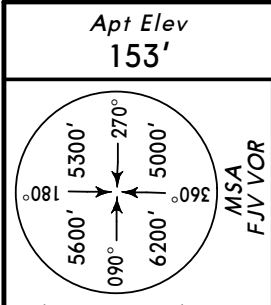
This SID requires a minimum climb gradient of 304' per NM (5%) up to 8000'.

Gnd speed-Kt	75	100	150	200	250	300
304' per NM	380	506	760	1013	1266	1519

Initial climb clearance 7000', further climb as instructed by ATC.

**ROUTING**

BOSOV - KUSEN (7000'+) - EMOPI - TUDOP - SHR - MIADA.



Trans level: FL150 Trans alt: 13000'  
Avoid overflying the city below 5000'.

RAK 2F, RANBI 3F [RANB3F]  
TONVO 1F [TONV1F]  
RWY 11 RNAV DEPARTURES  
RNAV 5

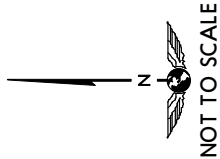
**SPEED MAX 250 KT BELOW 8000'**

Initial climb clearance **7000'**, further climb as instructed by ATC.

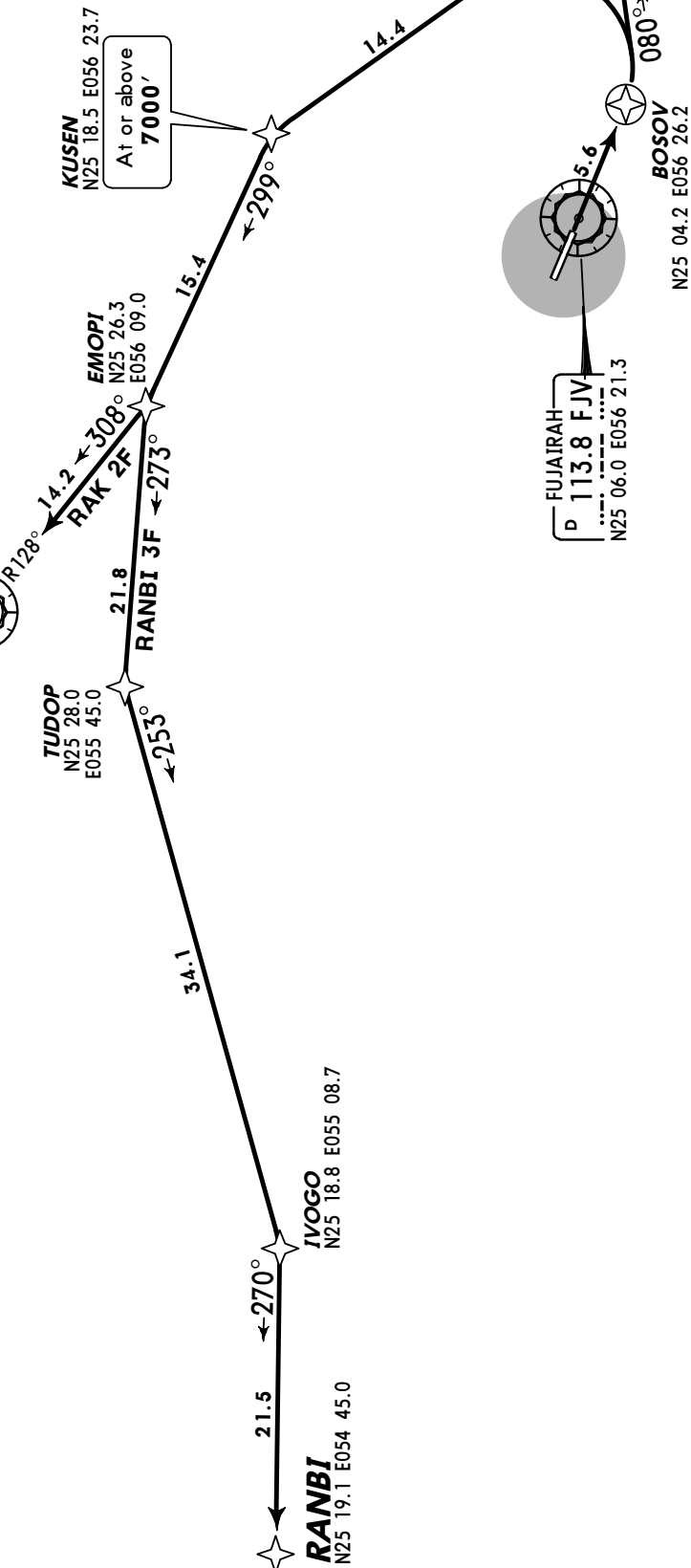
ROUTING	
<b>SID</b>	
<b>RAK 2F</b>	BOSOV - KUSEN (7000'+) - EMOPI - RAV.
<b>RANBI 3F</b>	BOSOV - KUSEN (7000'+) - EMOPI - TUDOP - IVOGO - RANBI.
<b>TONVO 1F</b>	BOSOV - TONVO.

These SIDs require a minimum climb gradient of 304' per NM (5%) up to **8000'**.

Gnd speed-Kt	75	100	150	200	250	300
304' per NM	380	506	760	1013	1266	1519



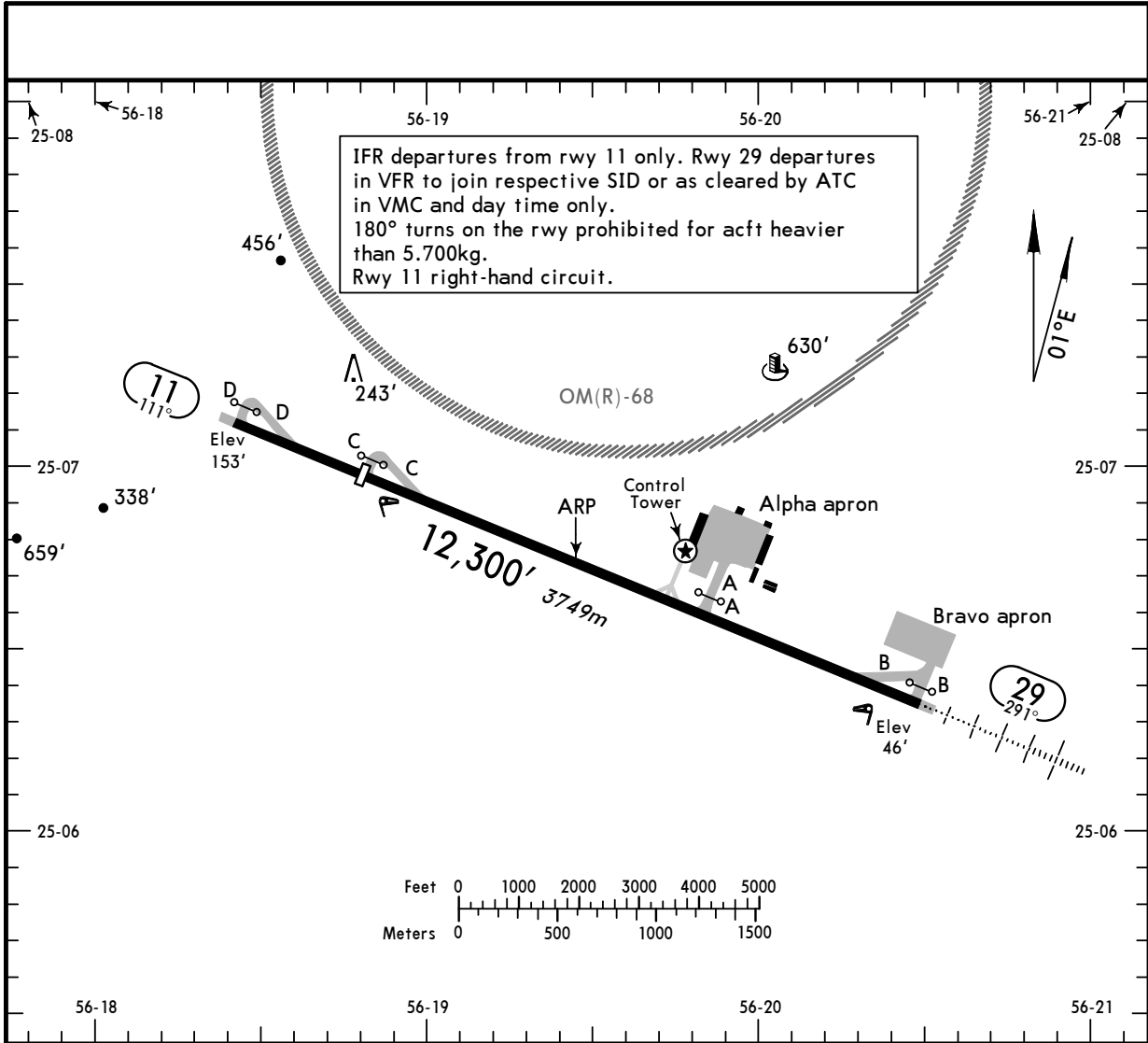
RAS AL KHAIMAH  
D 113.6 RAV  
N25 35.3 E055 56.8



OMFJ/FJR  
 Apt Elev 153'  
 N25 06.7 E056 19.5

28 MAY 10 (4)

FUJAIRAH, UAE  
 FUJAIRAH INTL



ADDITIONAL RUNWAY INFORMATION

RWY	HIRL (60m) ALS ❶ PAPI-L (angle 3.0°) ❷	USABLE LENGTHS		TAKE-OFF	WIDTH
		Threshold	LANDING BEYOND Glide Slope		
11	HIRL (60m) ALS ❶ PAPI-L (angle 3.0°) ❷	10,004' 3049m			148'
29	HIRL (60m) HIALS PAPI-L (angle 3.0°)		11,392' 3472m		45m

- ❶ Configuration unknown.
- ❷ PAPI-L use restricted to MAX 4 NM from displ thresh or from D6.4 FJV. Approximate PAPI glide path altitude at this distance is 1500'.

JAR-OPS

TAKE-OFF ❶

	Rwy 11			Rwy 29	
	LVP must be in force RCLM (DAY only) or RL	RCLM (DAY only) or RL	NIL (DAY only)	RCLM (DAY only) or RL	NIL (DAY only)
A					
B	250m	400m	500m	VMC ONLY	
C					
D	300m				

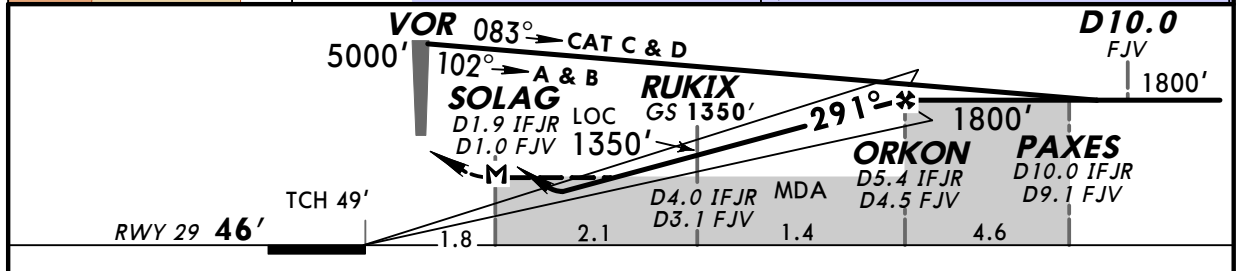
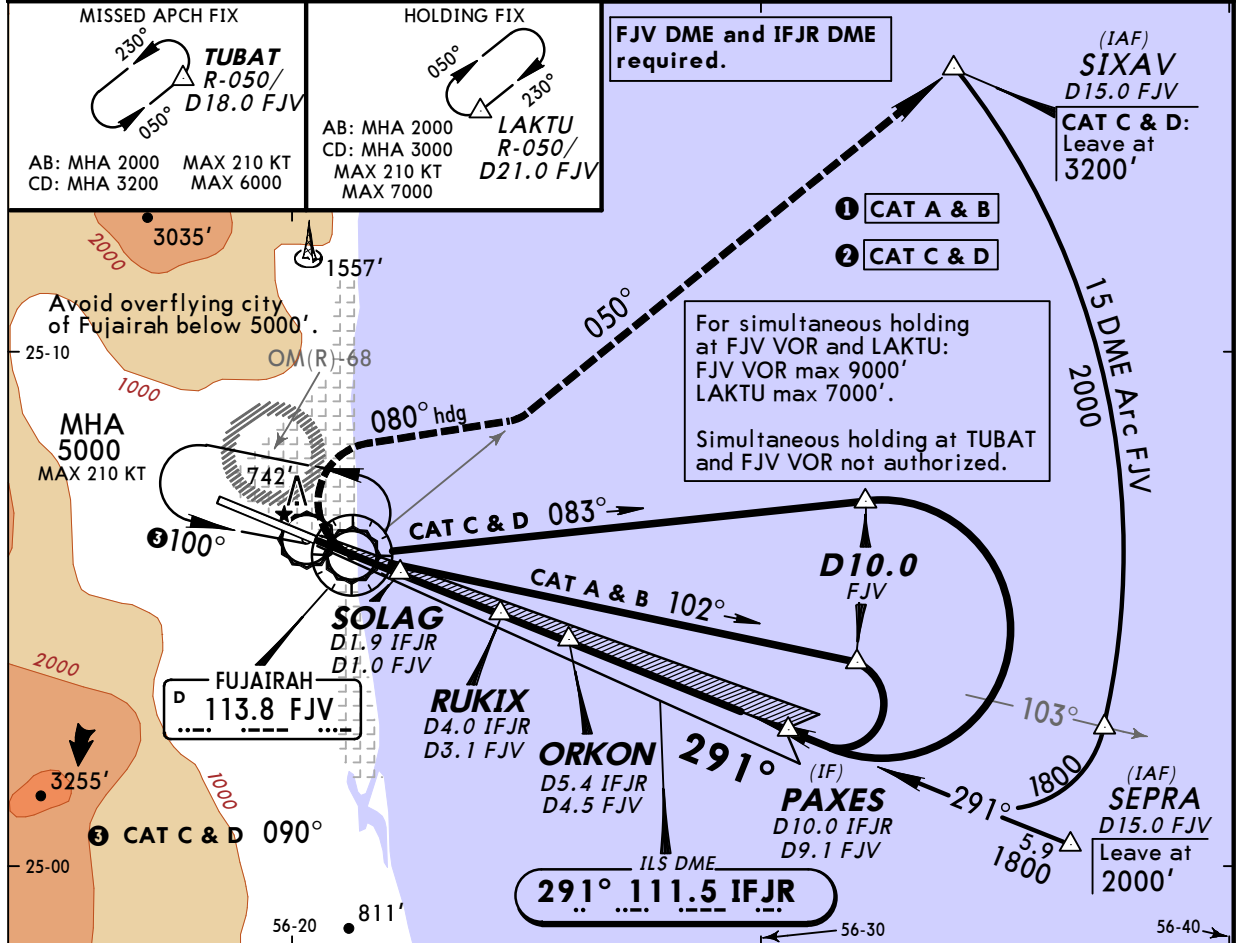
❶ Operators applying U.S. Ops Specs: CL required below 300m.

OMFJ/FJR  
FUJAIRAH INTL

28 MAY 10 (5)

FUJAIRAH, UAE  
ILS Z or ILS Y Rwy 29

LOC IFJR <b>111.5</b>	Final Apch Crs <b>291°</b>	GS <b>RUKIX</b> <b>1350' (1304')</b>	ILS DA(H) Refer to Minimums	Apt Elev <b>153'</b>  <b>RWY 46'</b>	
<b>MISSED APCH:</b> As soon as practical climbing turn RIGHT (MAX KT: A-100, B-130, C & D-185) to 2000' (CAT C & D: 3200') to heading 080° to intercept R-050 FJV. Join holding at TUBAT, or as directed. Do not turn before MAP.					
Alt Set: hPa		Rwy Elev: 2 hPa	Trans level: FL 150	Trans alt: 13000'	



Gnd speed-Kts	70	90	100	120	140	160		Refer to Missed Apch above	
ILS GS or LOC Descent angle 3.00°	377	484	538	646	753	861			
MAP at SOLAG/D1.9 IFJR/D1.0 FJV									
<b>JAR-OPS STRAIGHT-IN LANDING RWY29</b>								<b>CIRCLE-TO-LAND</b>	
<b>ILS</b> DA(H) A: <b>710'</b> (664') C: <b>730'</b> (684') B: <b>720'</b> (674') D: <b>740'</b> (694')				<b>LOC (GS out)</b> MDA(H) AB: <b>640'</b> (594') D: <b>670'</b> (624') C: <b>660'</b> (614')				Not authorized North-East of rwy	
FULL		ALS out		ALS out		Max Kts	MDA(H)		
A			RVR 1000m		RVR 1500m	100	1110' (957')	1500m	
B			RVR 1200m		RVR 2000m	135	1110' (957')	1600m	
C	RVR 800m	RVR 1200m				C	NOT AUTHORIZED		
D			RVR 1600m			D			

