

OMRK/RKT
RAS AL KHAIMAH INTL

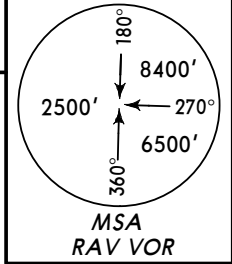
21 JUL 06 1

RAS AL KHAIMAH, UAE

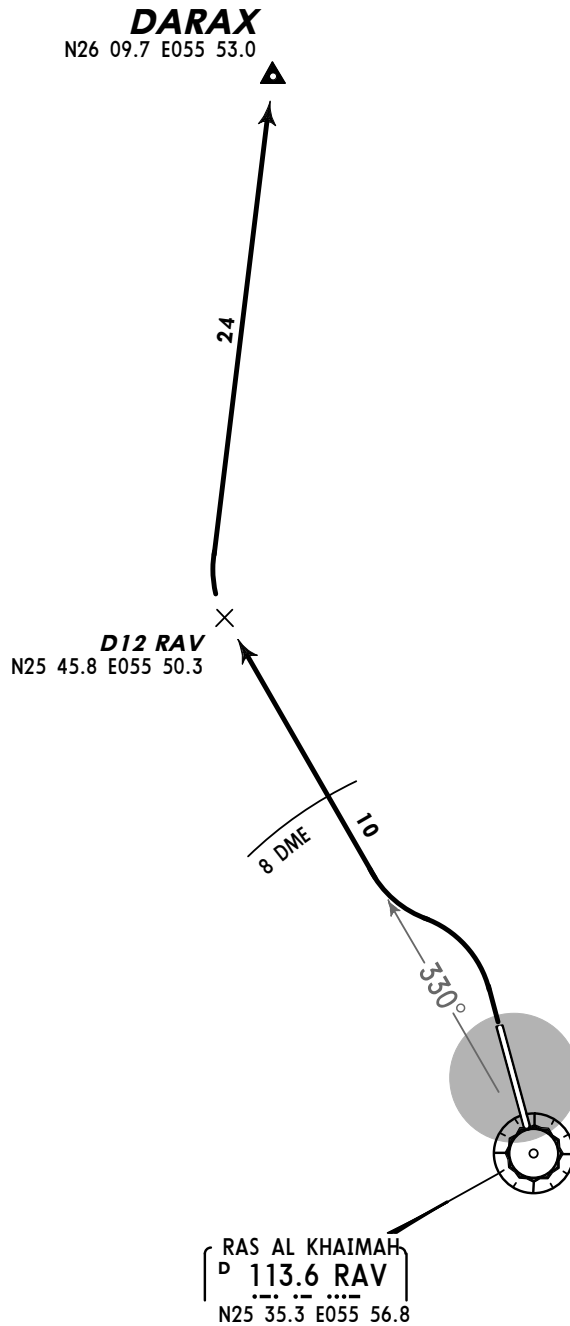
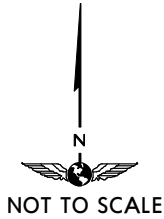
SID

Apt Elev
102'

Trans level: FL150 Trans alt: 13000'



DARAX ONE [DARAX1] RWY 34 DEPARTURE



Climb to and maintain **6000'**

ROUTING

Turn LEFT, intercept RAV R-330 within RAV 8 DME to D12 RAV, turn RIGHT to DARAX.

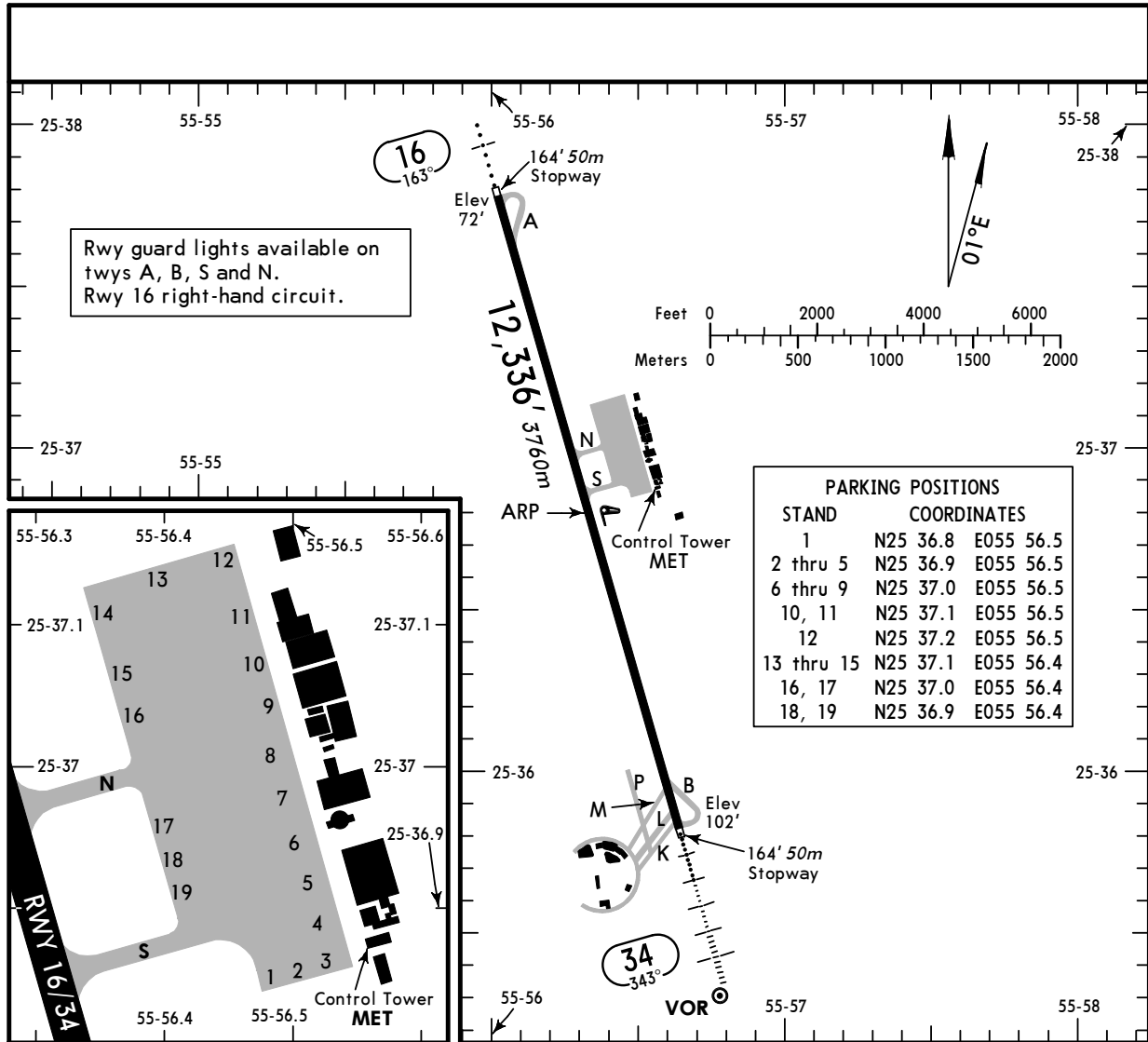
OMRK/RKT

Apt Elev 102'
N25 36.8 E055 56.3

28 MAY 10 (2)

RAS AL KHAIMAH, UAE

RAS AL KHAIMAH INTL



ADDITIONAL RUNWAY INFORMATION

RWY		USABLE LENGTHS		TAKE-OFF	WIDTH
		Threshold	Landing Beyond		
16	HIRL (60m) ALS PAPI-L (angle 3.0°)				148'
34	HIRL (60m) HIALS PAPI-L (angle 3.0°)		11,182' 3408m		45m

JAR-OPS

TAKE-OFF 1

	All Rwys		
	LVP must be in force		
	RCLM (DAY only) or RL	RCLM (DAY only) or RL	NIL (DAY only)
A			
B	250m	400m	500m
C			
D	300m		

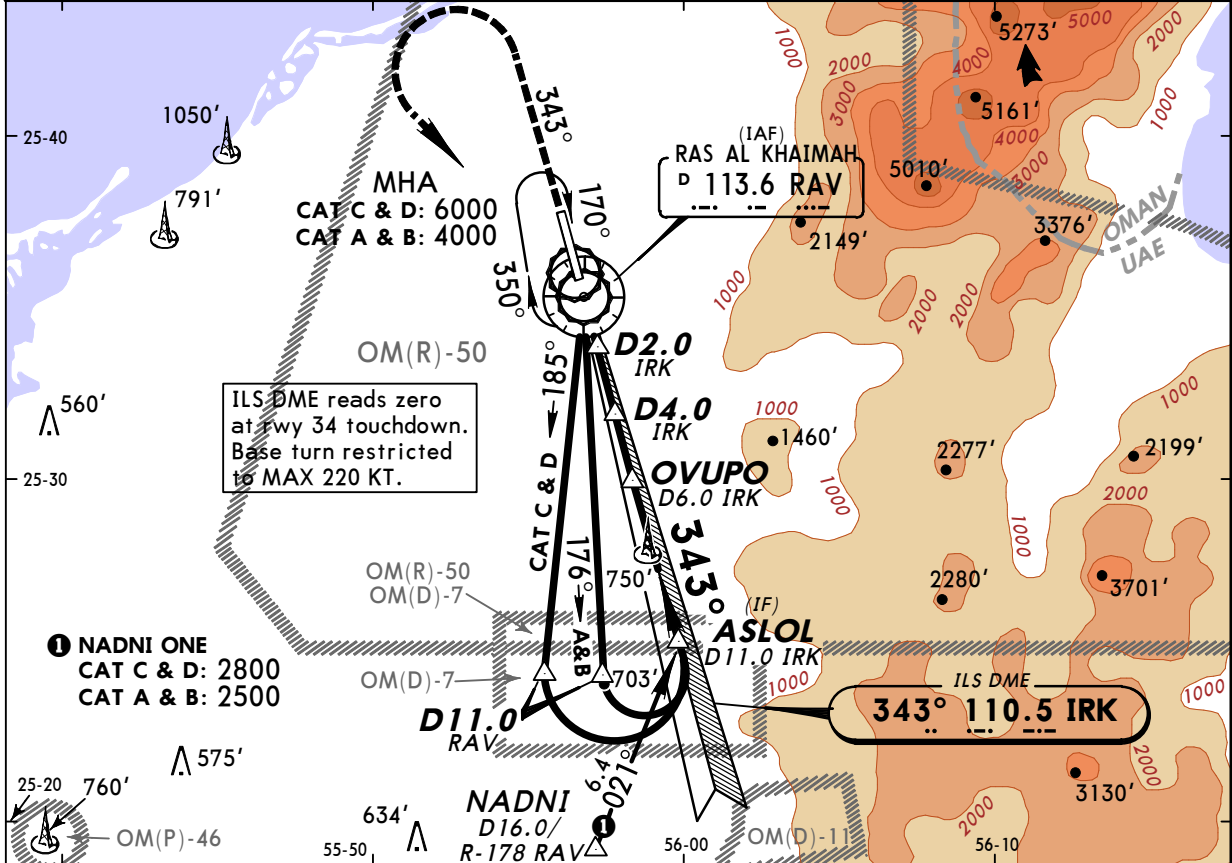
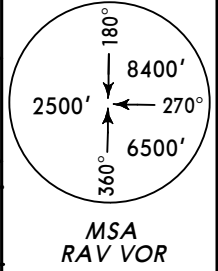
1 Operators applying U.S. Ops Specs: CL required below 300m.

OMRK/RKT
RAS AL KHAIMAH INTL

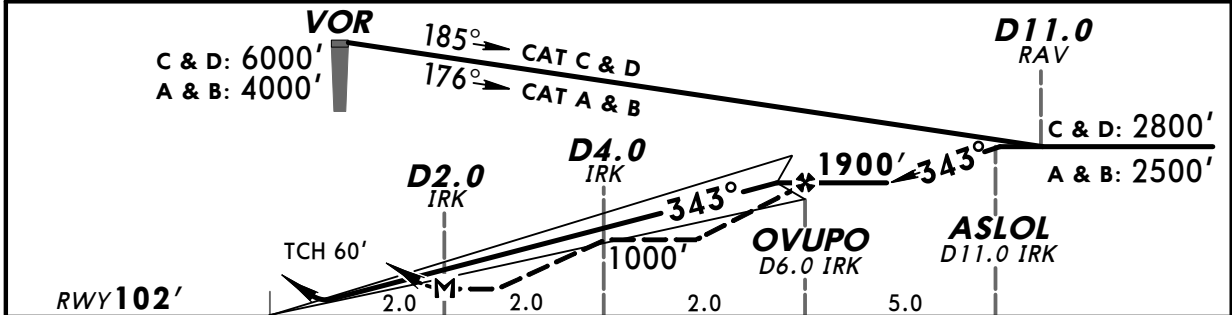
28 MAY 10 (3)

RAS AL KHAIMAH, UAE
VOR DME ILS Rwy 34

LOC IRK 110.5	Final Apch Crs 343°	GS No altitude published	ILS DA(H) 302' (200')	Apt Elev 102' RWY 102'
<p>MISSED APCH: Climb on R-343 RAV to CAT A & B: 4000', CAT C & D: 6000' When passing CAT A & B: 2500', CAT C & D: 4500' turn LEFT to join holding at VOR.</p>				
Alt Set: hPa		Rwy Elev: 4 hPa	Trans level: FL 150	Trans alt: 13000'



LOC (GS out)	IRK DME	1.0	2.0	3.0	4.0	5.0	6.0
	ALTITUDE	430'	740'	1060'	1380'	1700'	1900'



Gnd speed-Kts	70	90	100	120	140	160	HIALS PAPI Refer to Missed apch above
GS 3.00°	377	484	538	646	753	861	
MAP at D2.0 IRK							

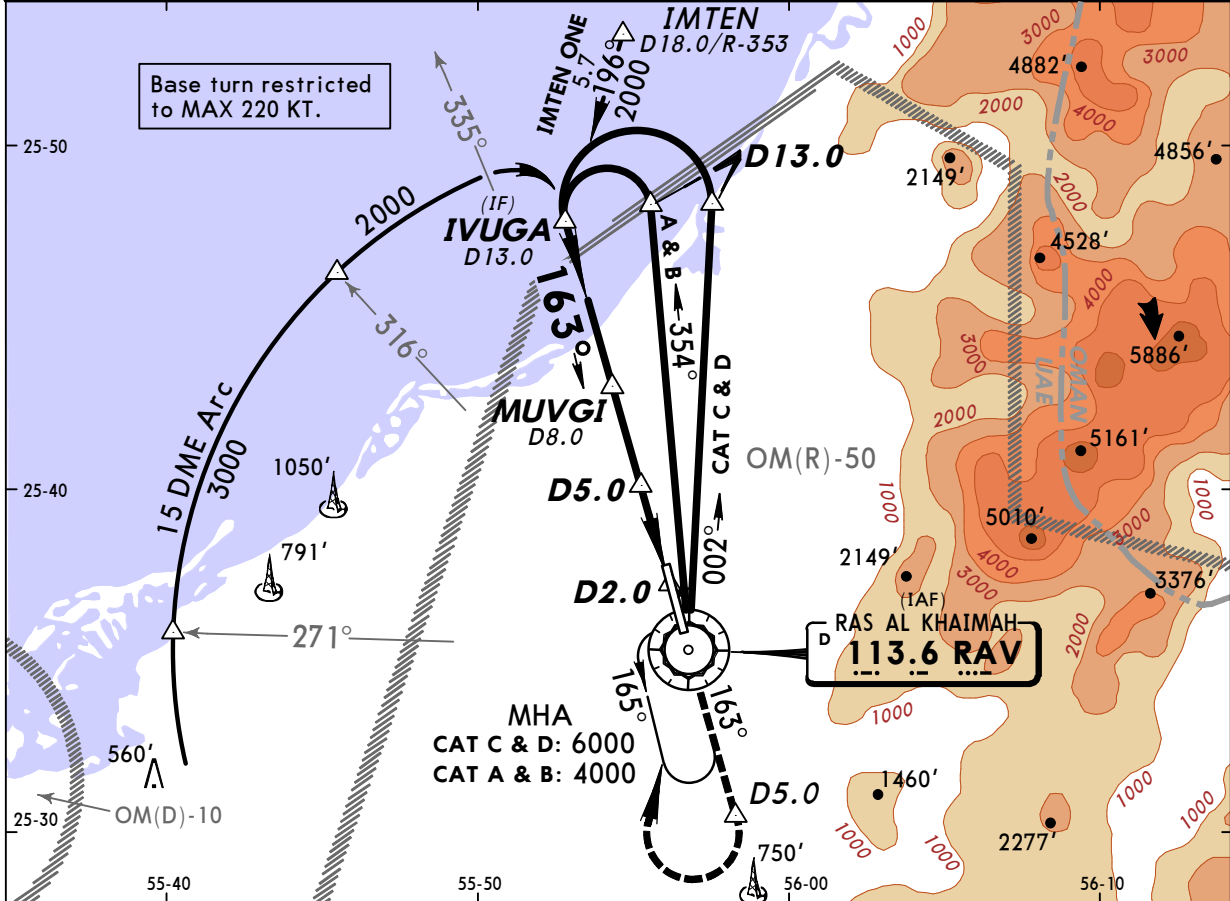
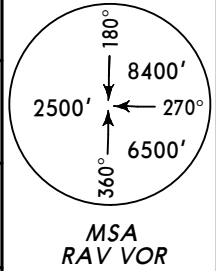
JAR-OPS STRAIGHT-IN LANDING RWY 34			
ILS DA(H) 302' (200')		LOC (GS out) MDA(H) 500' (398')	
FULL	ALS out	ALS out	ALS out
A		RVR 900m	RVR 1500m
B	RVR 550m	RVR 1000m	RVR 1800m
C		RVR 1000m	RVR 2000m
D		RVR 1400m	

OMRK/RKT
RAS AL KHAIMAH INTL

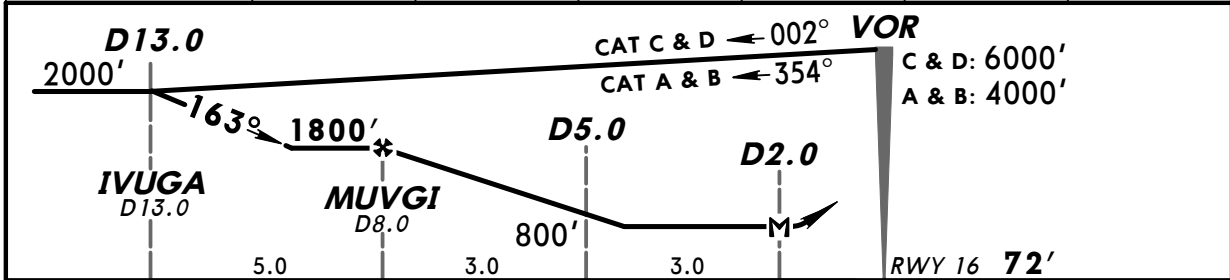
28 MAY 10 (4)

RAS AL KHAIMAH, UAE
VOR DME Rwy 16

VOR RAV 113.6	Final Apch Crs 163°	Minimum Alt MUVGI 1800' (1728')	MDA(H) 480' (408')	Apt Elev 102' RWY 72'
MISSED APCH: Climb to CAT A & B: 4000', CAT C & D: 6000'. STRAIGHT AHEAD via VOR on R-163 to D5.0, then turn RIGHT to join holding at VOR.				
Alt Set: hPa		Rwy Elev: 3 hPa		Trans level: FL 150
				Trans alt: 13000'



RAV DME	8.0	7.0	6.0	5.0	4.0	3.0
ALTITUDE	1800'	1490'	1190'	870'	570'	260'



Gnd speed-Kts	70	90	100	120	140	160	ALS PAPI Refer to Missed apch above
Descent Angle	2.92°	362	465	517	620	723	
MAP at D2.0							

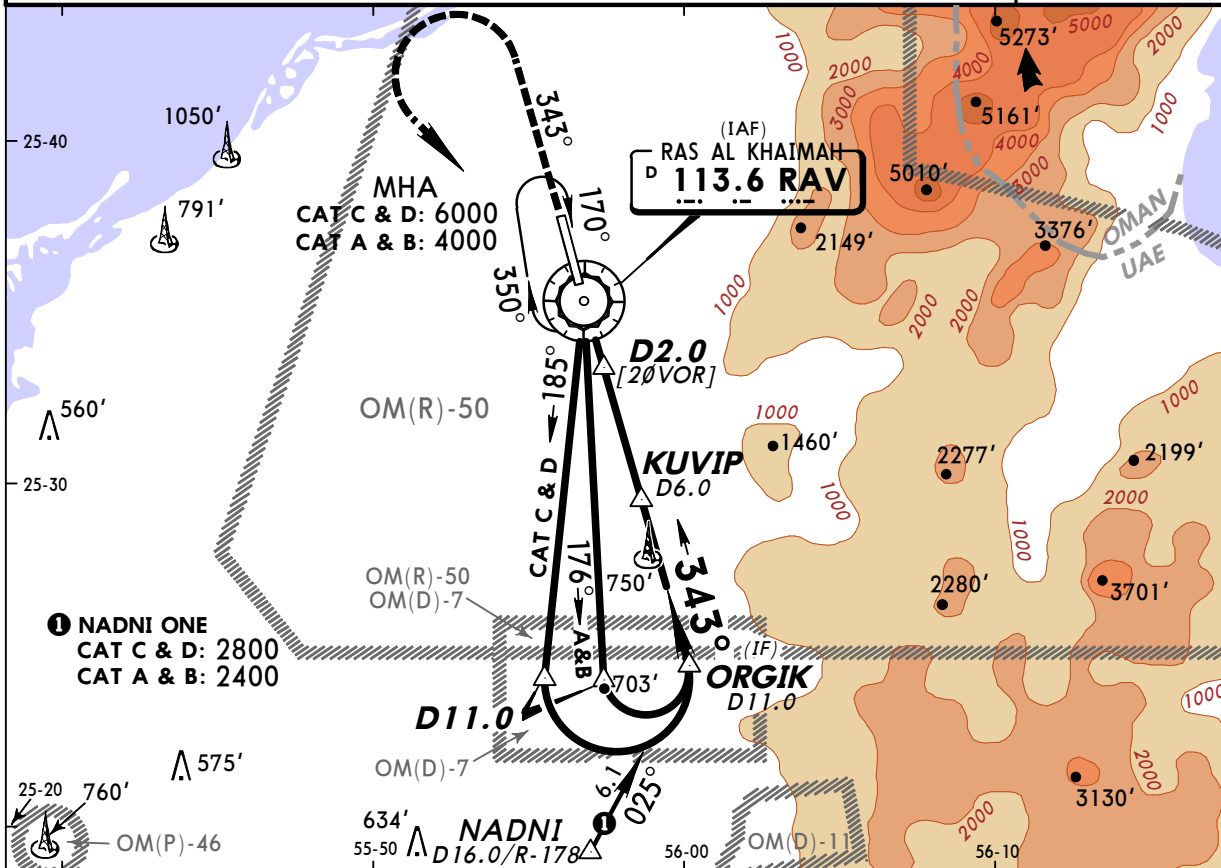
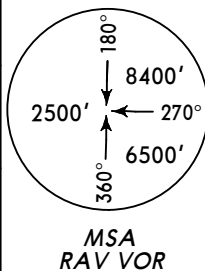
JAR-OPS		STRAIGHT-IN LANDING RWY 16	
		MDA(H) 480' (408')	
		ALS out	
A	RVR 1300m	RVR 1500m	
B	RVR 1400m	RVR 1800m	
C	RVR 1600m	RVR 2000m	
D	RVR 1800m		

OMRK/RKT
RAS AL KHAIMAH INTL

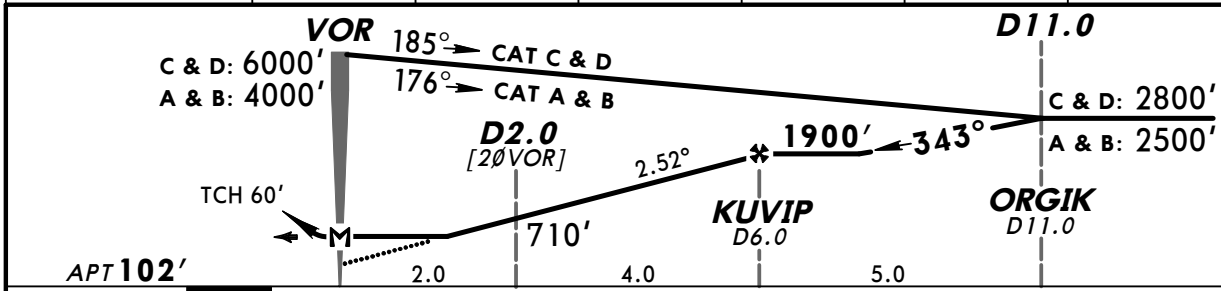
28 MAY 10 (5)

RAS AL KHAIMAH, UAE
VOR DME Rwy 34

VOR RAV 113.6	Final Apch Crs 343°	Minimum Alt KUVIP 1900' (1798')	MDA(H) 570' (468')	Apt Elev 102'
<p>MISSED APCH: Climb on R-343 to CAT A & B: 4000', CAT C & D: 6000'. When passing CAT A & B: 2500', CAT C & D: 4500' turn LEFT to join holding at VOR.</p>				
Alt Set: hPa		Apt Elev: 4 hPa	Trans level: FL 150	Trans alt: 13000'
Base turn restricted to MAX 220 KT.				



RAV DME	0.0	1.0	2.0	3.0	4.0	5.0
ALTITUDE	290'	560'	830'	1100'	1360'	1630'



Gnd speed-Kts	70	90	100	120	140	160	HIALS PAPI Refer to Missed apch above
Descent Angle 2.52°	312	401	446	535	624	713	
MAP at VOR							

JAR-OPS		STRAIGHT-IN LANDING RWY 34	
		MDA(H) 570' (468')	
		ALS out	
A	RVR 1000m	RVR 1500m	
B	RVR 1200m		
C	RVR 1600m	RVR 2000m	
D	RVR 1600m		